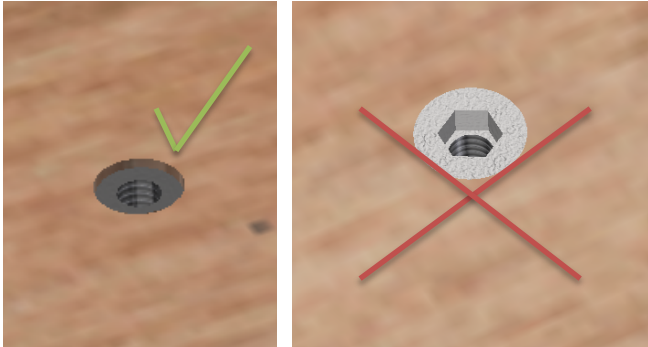
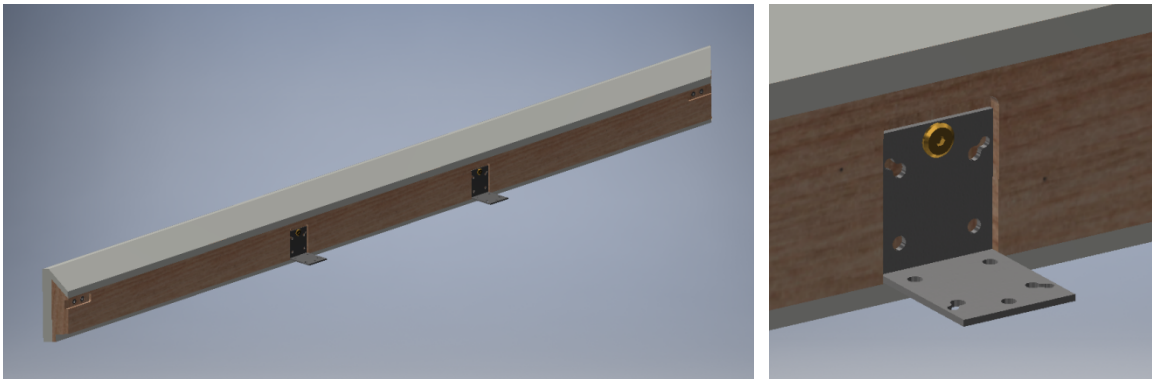


AKVA Nordic/Modulex with headboard

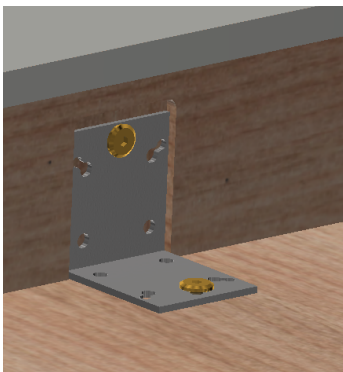
- Assemble the base. (See also assembly instructions for Akva bases.)
- The bottom plates are placed on the base and joined with the 4 legged plates. The side of the bottom plates that should be turning up is the one with the threaded bushings – like shown on these pictures.



- **Upholstered frame:** the frame parts of the bed are assembled with angle brackets. They are only to be tightened loosely at this point.



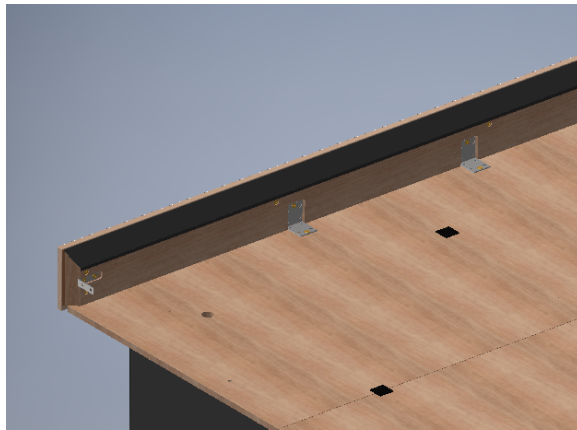
- The frame parts are positioned on the bottom plates, but the screws are not to be tightened firmly at this point.



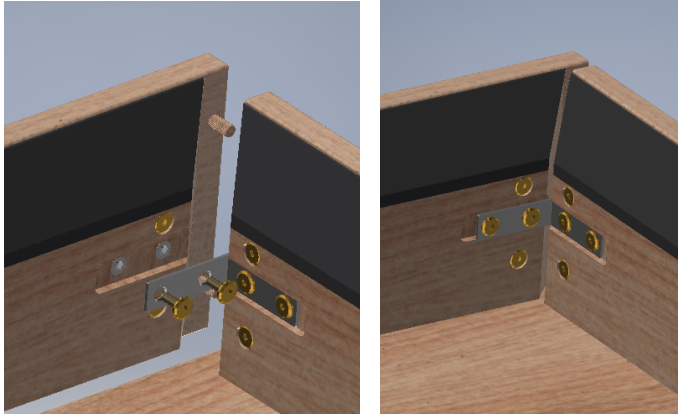
- The angle brackets are tightened loosely at the corners. Then one by one the screws at each corner are tightened firmly. It is important to begin with the inner screws. After this the angle brackets are all to be tightened firmly.



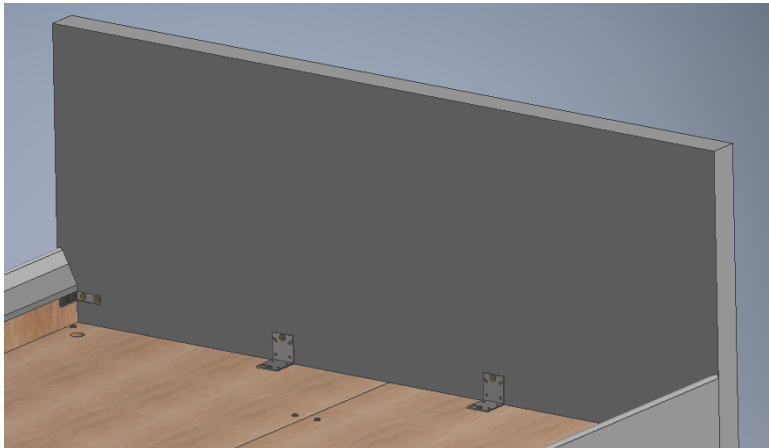
- **Wooden frame:** the frame parts are assembled with angle brackets that are to be tightened firmly. Then screw the angle brackets to the bottom plates, position the frame parts and screw them to the bottom plates, but not quite 100% firm yet.



- Dowels and angle brackets are placed in the head- and footend frame parts. These parts are positioned on the bed and fastened to the long side parts of the frame. Finally tighten all screws firmly.

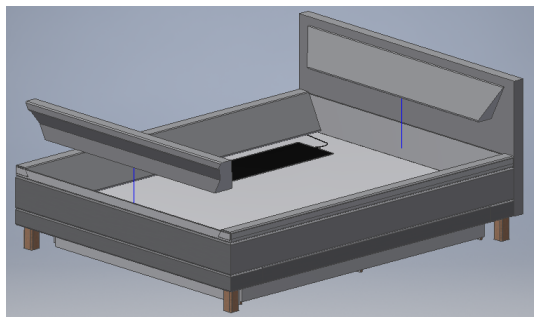
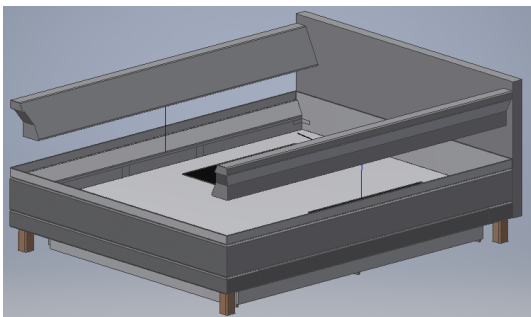


- The headboard is fitted with one angle bracket at each corner and two secured to the base.



- The lower part of the cover is positioned with the AKVA logo at the foot end. The top cover is zipped off and put aside. The fixing paddles are put through the holes in the lower part of the cover and fixed to the bottom plates.
- At first the long sides of the foam frame are placed in the cover, then the head and food end parts.
Modulex has sloping sides, and Modulex Q has straight sides.

Note: The thin section is placed by the headboard.



- The heater(s) is positioned, and the wire is led under the foam frame and through the hole in the lower part of the cover. (See assembly instructions Akva Vital Electronics heater before installing the heater.)
- The safety liner Zipliner is placed in the bed and zipped onto the cover.
- If this is a bed with a dual mattress system the divider is now placed in the middle.
- The water mattress(es) is placed in the safety liner. (See instructions for water mattresses.)

- After filling the mattress, removing the surplus of air and adding one or two bottles of Long Life the top cover is zipped on the lower part of the cover. (See instructions for covers.)