

Contents

Assembly instructions for Akva bases/headboards:

Akva Box.....	2
Akva 2 Box.....	3
Akva 2 Box on castors	6
Akva 4 Box	9
Akva 4 Box on castors	12
Akva 8 Box	14
Akva storage base, single	17
Akva storage base	21
Akva Sound	24
Akva Benti	25

Assembly instructions for Akva waterbeds:

Akva Soft/Akva Junior	26
Inside Akva	27
Akva Allround	28
Akva Deco	29
Akva Vega	30
Akva Mira without headboard	32
Akva Mira with headboard.....	33
Akva BoxBed	34
Hardside	36
Akva Wellness.....	37

Spare parts:

Akva Vital Electronic heating element	38
Mattress.....	41
Massage.....	43

Other information:

Cover and comfort top	44
Cover for foam divider and sheets	45
Care / maintenance / tips	47
Care and maintenance form	49
Warranty conditions	50

Congratulations on your choice of an Akva Waterbed!

You have made a fine choice. Treating and caring for your waterbed correctly, you will enjoy it for many years to come – sleeping and resting comfortably too.

Akva Waterbeds was founded in 1981 in the little Danish town of Ry, and all parts of your new bed are now manufactured in our own facilities for optimal matching. Our focus on insourcing ensures you that an Akva waterbed meets the highest quality standards.

Having more than 25 years of experience Akva can offer a five-year guarantee on the weldings of the mattresses as well as our heating element. A long durability also depends on correct care, and it is therefore important that you read the following pages and save this booklet in case you need to refer to it again. The booklet gives you a thorough description of the assembly of your waterbed as well as several useful tips and information regarding care and maintenance.

If you have any questions, please feel free to contact your dealer at any time for further assistance.

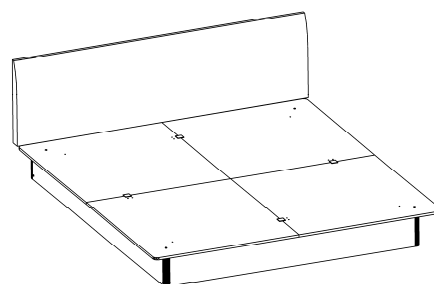
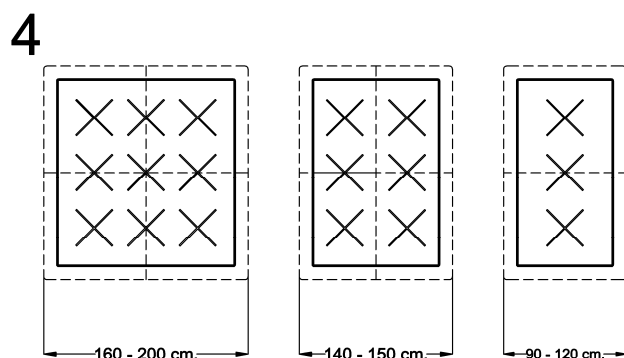
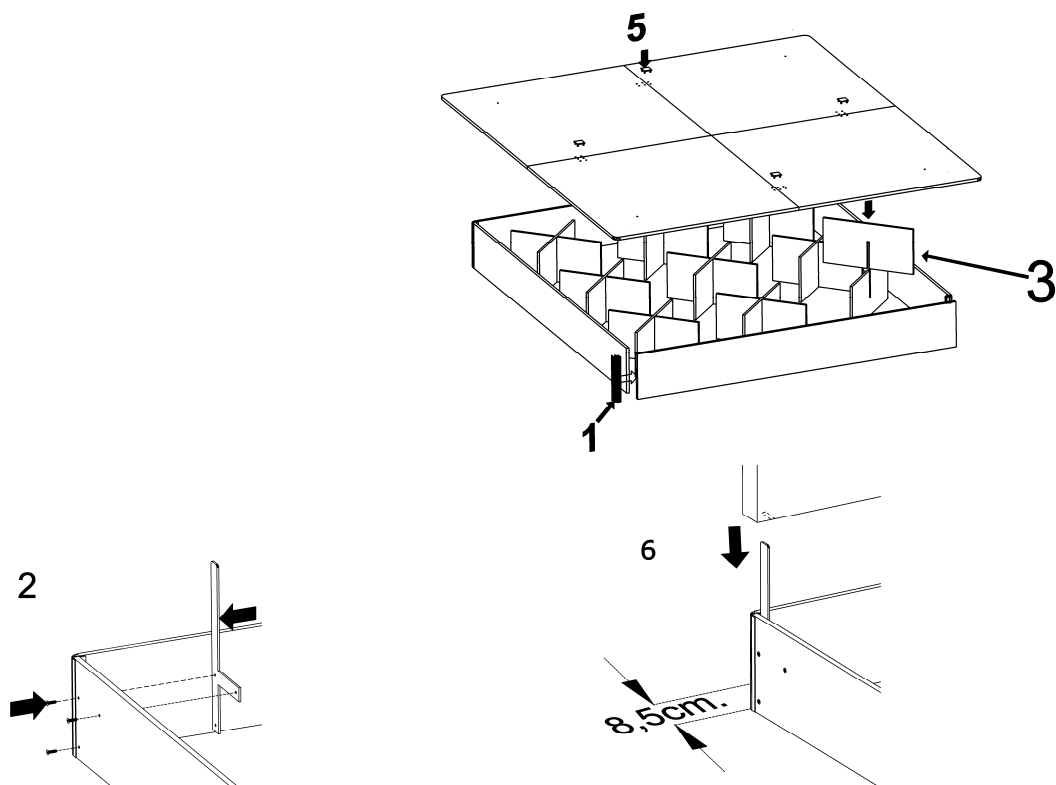
Help is also available on Akva Waterbeds' Internet website: www.akva.com

Our guarantee conditions are at the rear of this booklet.

Sleep well and once again congratulations on your new waterbed.

AKVA BOX

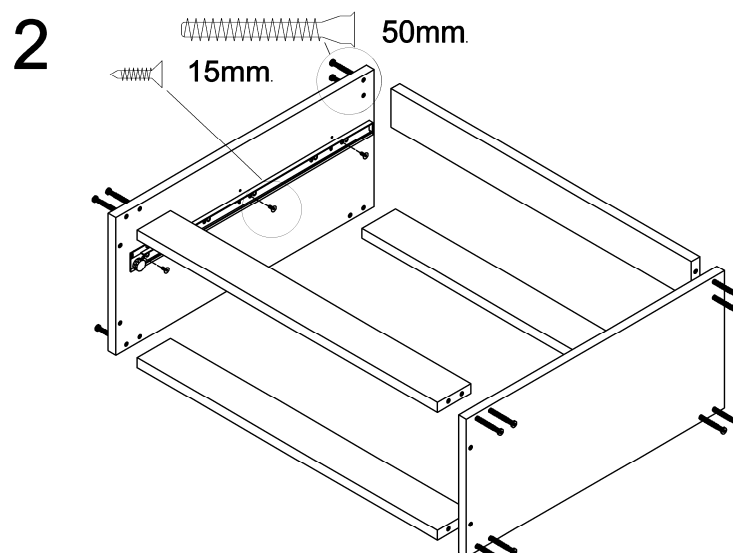
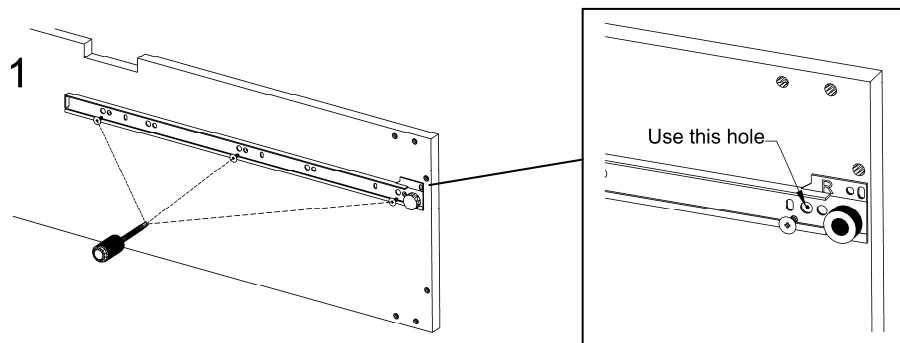
- Assemble the base frame with aluminium corners (1).
- Attach headboard fittings if the bed has a headboard (2).
- Position the stabilisers inside the base frame as shown (3).
- The number of stabilisers varies depending on the width of the bed (4).
- Position the base boards on the base frame and connect them with the four black "legs" (5).
- With headboard: fit the headboard by lowering the openings at the underneath of the headboard to slide on to both fittings (6).

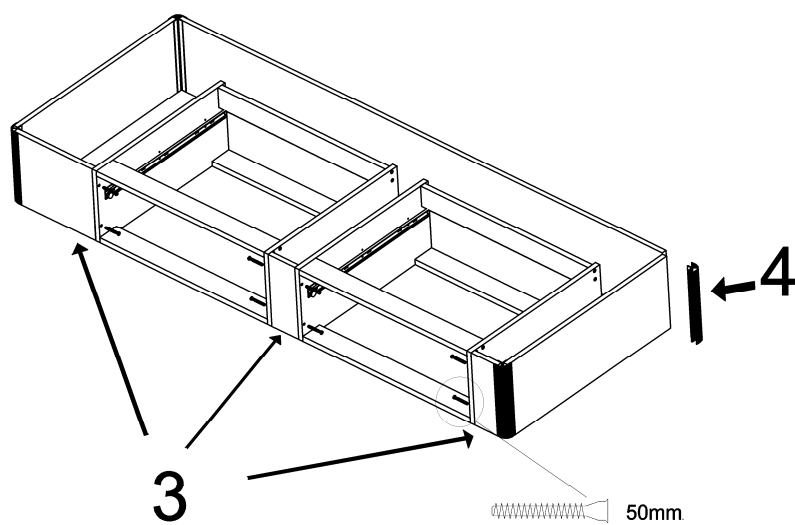


AKVA 2 BOX

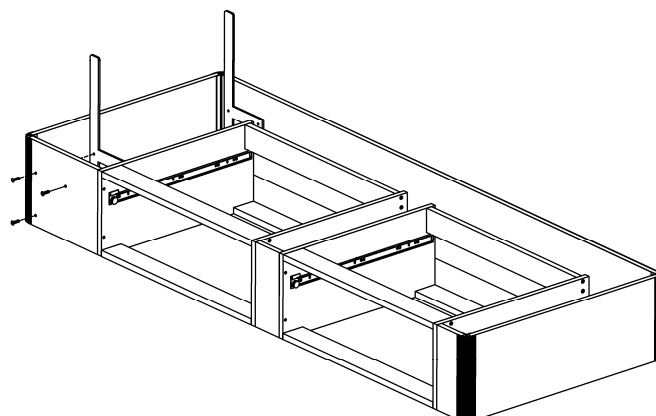
Directions for box base with drawers only on one side and beds 90, 100 or 120 cm wide.

- Fit the rails on the cabinet sides where 3 points are marked with holes (1). Use the indicated holes shown on drawing (1). Turn the wheels on the rails downwards.
- Assemble the cabinets as shown (2).
- The cabinets are assembled with an intermediate piece (3) at the drawer opening.
- Place one intermediate piece on the cabinets at the foot end (3).
- Fit a head end piece which may vary in length depending on the length of the bed at the head end (3).
- Assemble the base parts with aluminium corners (4).
- If equipped with headboard: fit the headboard fittings to the head end piece (5).
- Assemble the drawers by putting down the drawer bottom inside the drawer sides, then screw the drawer back onto the metal sides (6). Please note that the drawer back is placed on top of the drawer bottom (6). Mount the brackets on the drawer front and the drawer bottom holders (6).
- You can adjust the height of the drawer by turning the screw on the lock bracket (7). Please note that the height can only be adjusted when the screw is loosened (8).
- Position the stabilisers as shown in the drawing. With headboard (9). Without headboard (10).
- For fitting of the base boards: see the instructions for the Akva box base

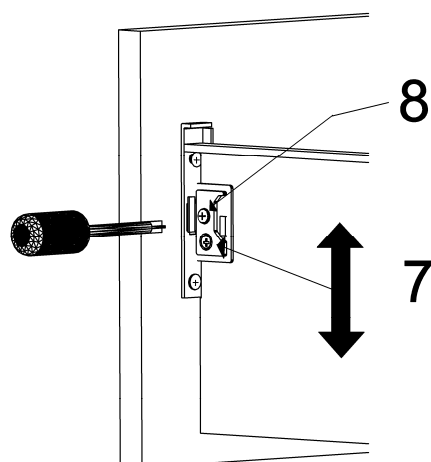
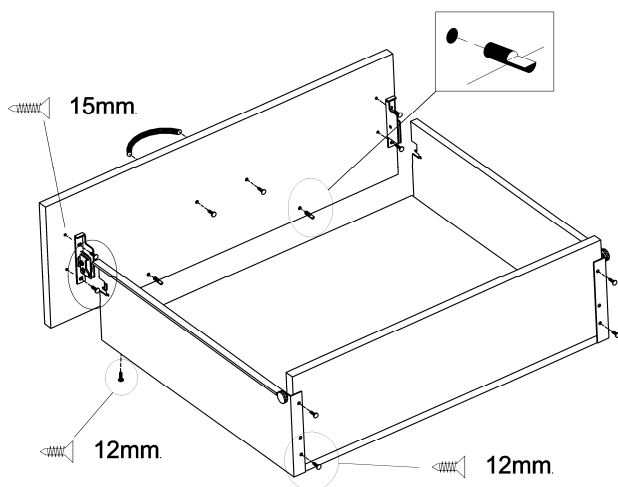




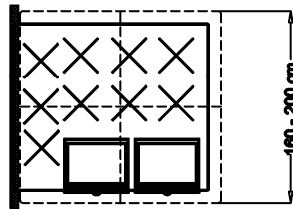
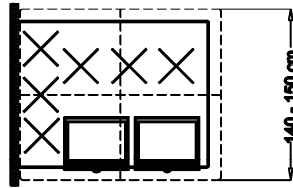
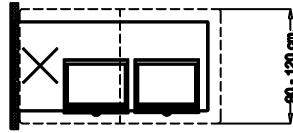
5



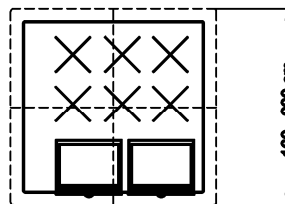
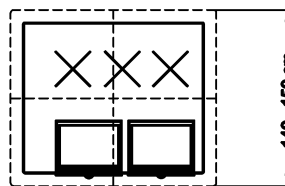
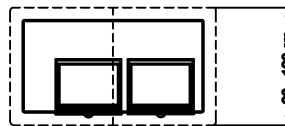
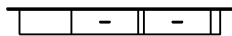
6



9

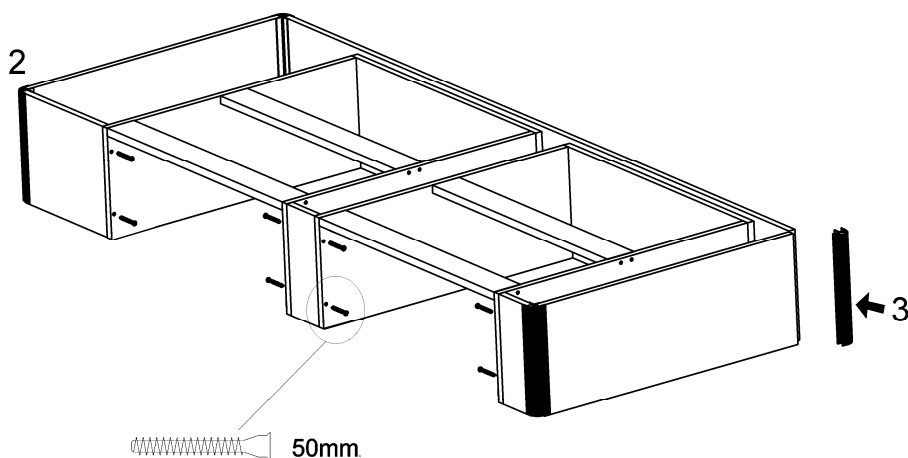
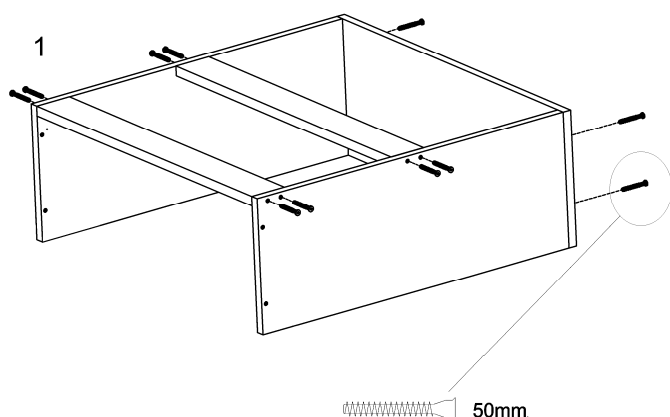


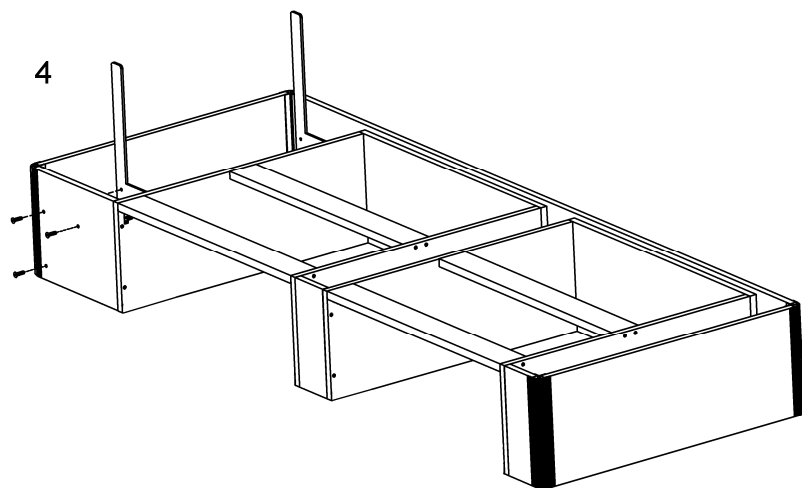
10



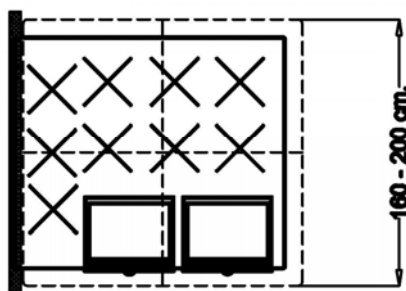
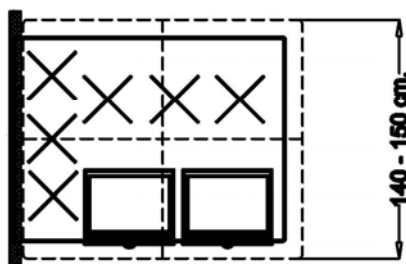
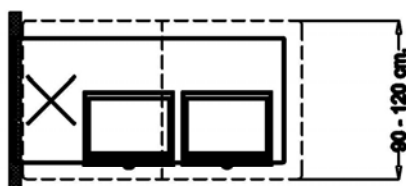
AKVA 2 Box (on castors)

- Assemble the cabinets by fitting the back piece on the sides and two intermediate pieces at the top of the sides (**1**).
- The cabinets are connected with intermediate pieces (**2**).
An equivalent intermediate piece is placed at the foot end.
- At the head end, fit 2 head end pieces which may vary in length depending on the length of the bed. The head end piece is always longer than that at the foot end. Fit the base corners with aluminium corners (**3**).
- If there is a headboard: fit the headboard fittings to the head and end piece (**4**).
- Position the stabilisers as shown in the drawing. With headboard (**5**). Without headboard (**6**).
- For fitting base boards: see the instructions for the Akva box base
- Fit the drawer by mounting the back piece of the drawer on the sides (**7**). The bottom of drawers is pushed into the milled grooves in the drawer sides (**8**) Please note the pilot holes for the castors must be placed downwards.
- Fit the dowels and machine screws in the pilot holes in the drawer front and the connecting fitting house in the drawer sides.
- Mount the brackets on the drawer front (**9**).
- The castors are fitted in the pilot holes.

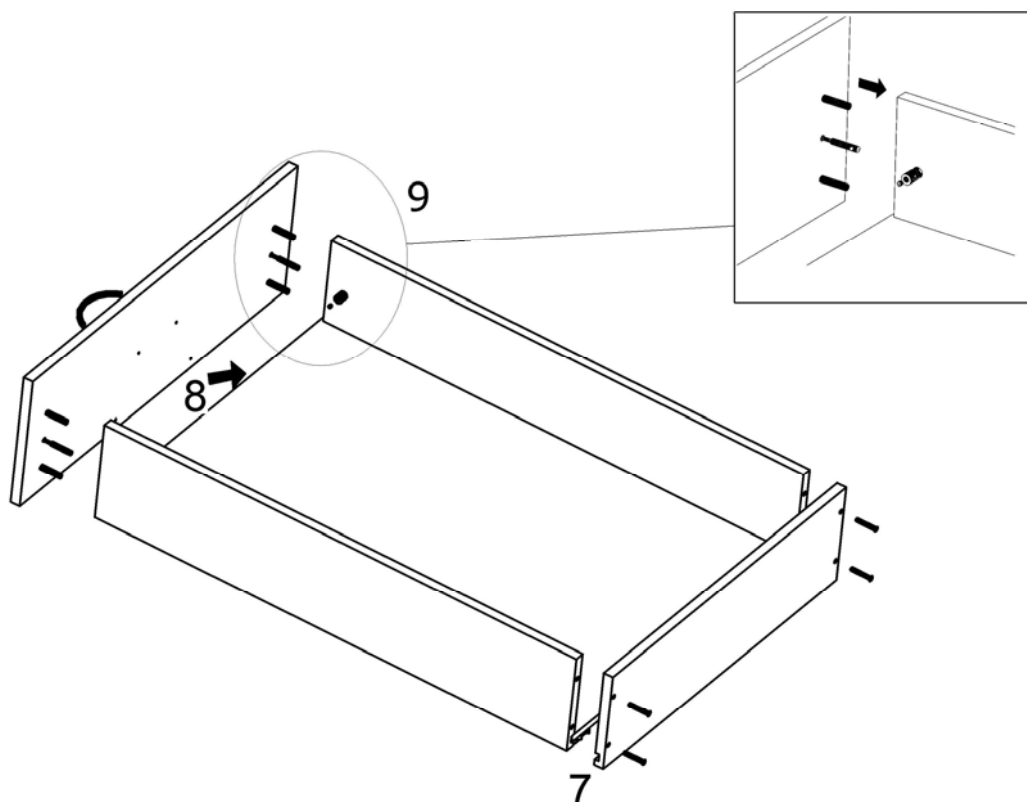
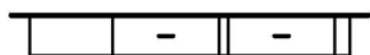
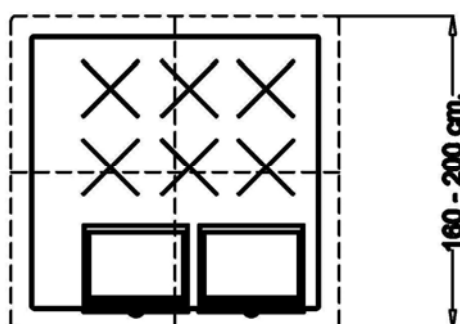
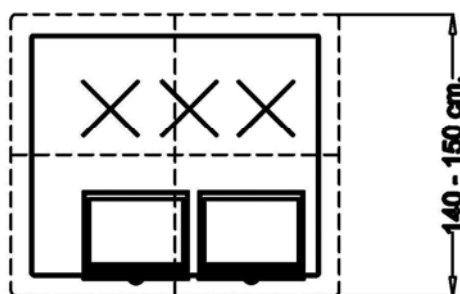
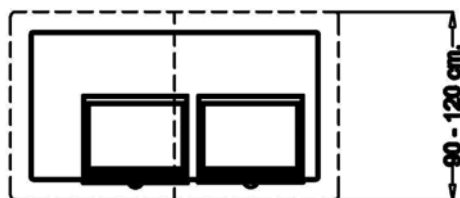




5

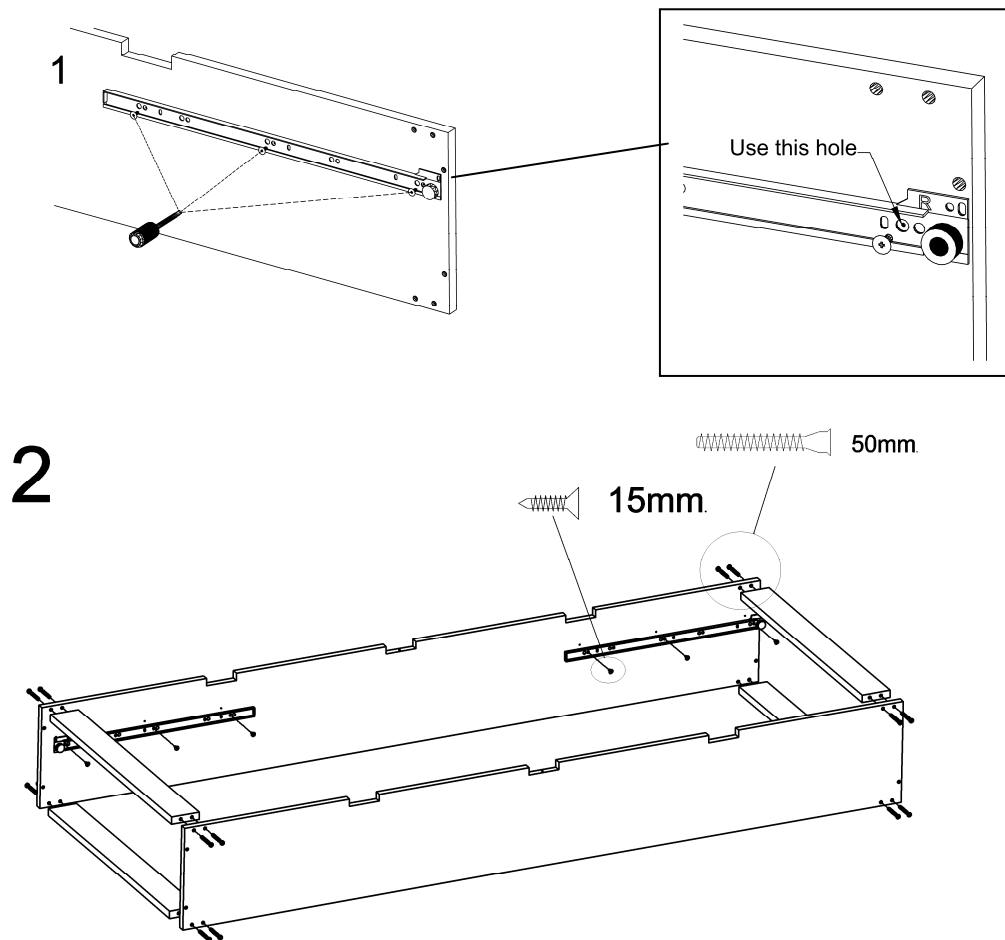


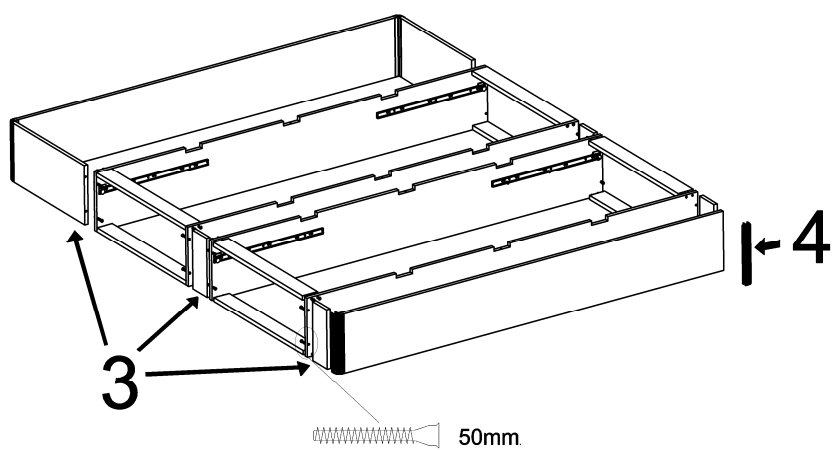
6



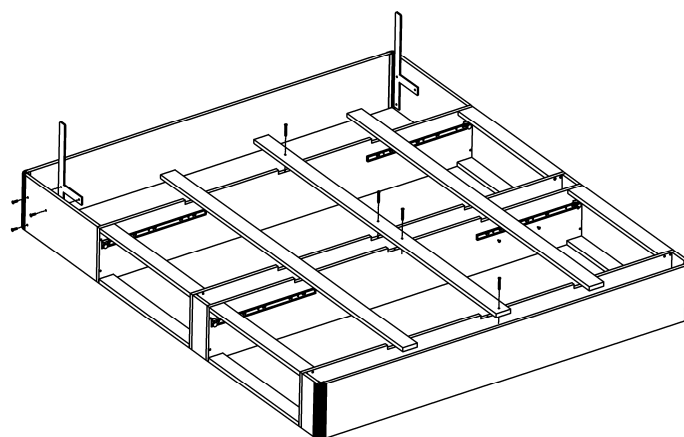
AKVA 4 BOX

- Fit the rails on the cabinet sides where 3 points are marked with holes (1). Use the indicated holes shown on drawing (1). Turn the wheels on the rails downwards.
 - Assemble the cabinets as shown (2).
 - The cabinets are assembled with an intermediate piece (3).
 - Place one intermediate piece on the cabinets at the foot end (3).
 - At the head end, fit 2 head end pieces which may vary in length depending on the length of the bed (3). Fit the base end with aluminium corners (4).
 - If there is a headboard: fit the headboard fittings to the head end piece (5).
 - Place the bearers in the milled grooves on the cabinet sides. Screw the centre bearer onto the cabinet sides (5).
 - Assemble the drawers by putting down the drawer bottom inside the drawer sides; then screw the drawer back onto the metal sides (6). Please note that the drawer back is placed on top of the drawer bottom (6).
 - Screw the drawer bottom onto the metal sides (6). Mount the brackets on the drawer front and the drawer bottom holders (6).
 - You can adjust the height of the drawer front by turning the screw on the lock bracket (7). Please note that the height can only be adjusted when the screw is loosened (8).
 - Position the stabilisers as shown in the drawing. With headboard (9). Without headboard (10).
 - For fitting base boards: see the instructions for the Akva box base
- NB! If the drawer base has drawers on only one side or is 90, 100 or 120 cm wide: see instructions for Akva 2 box

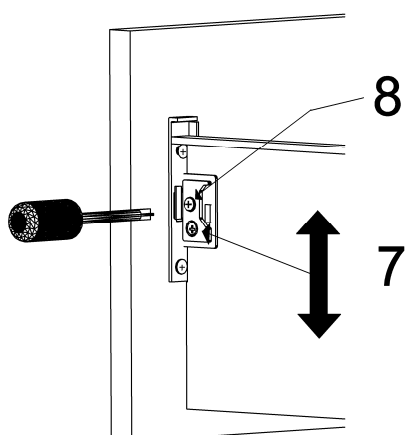
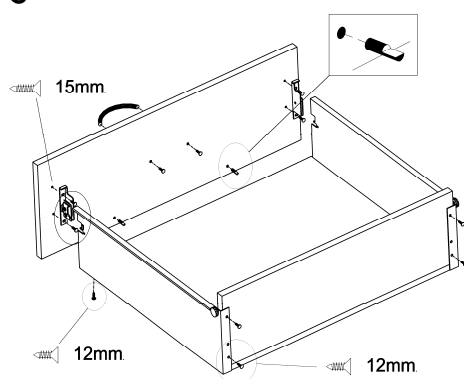




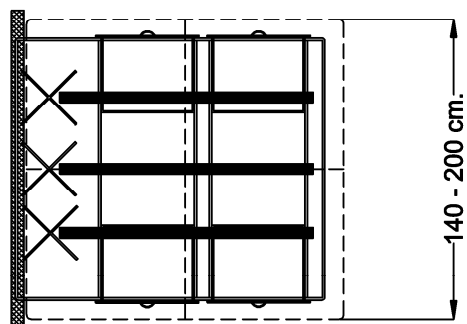
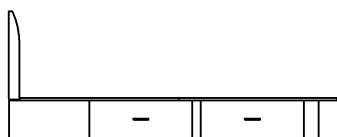
5



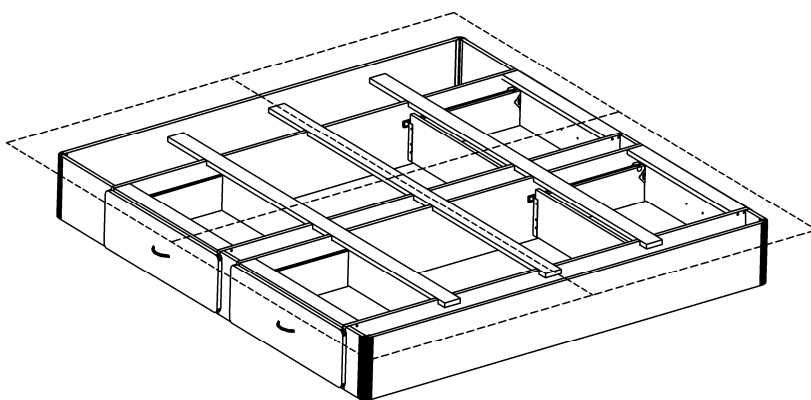
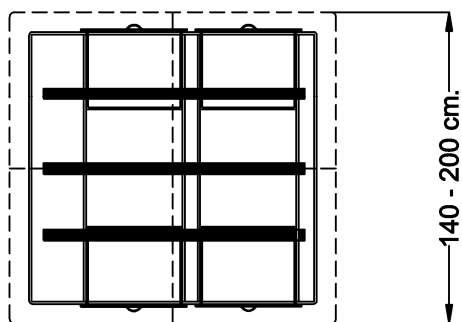
6



9

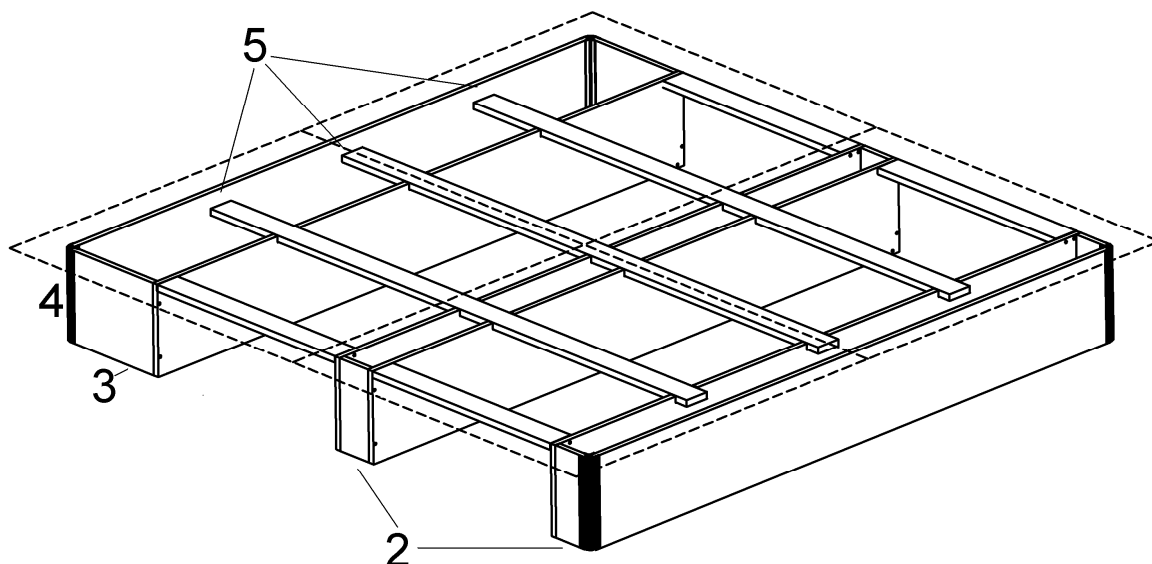
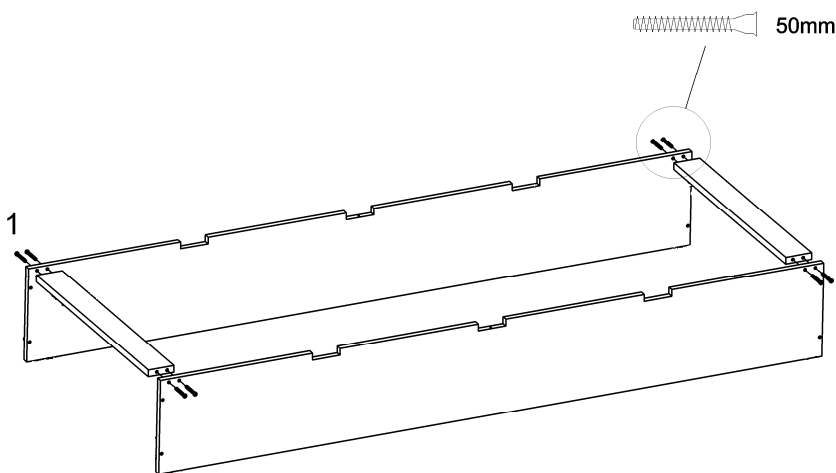


10

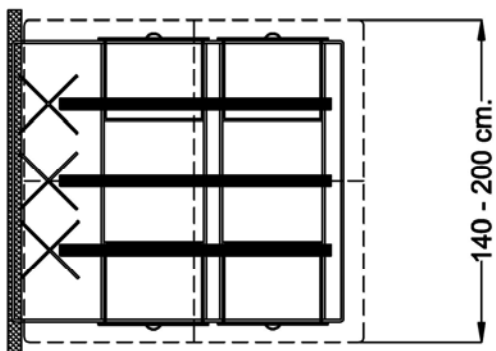


AKVA 4 Box (on castors)

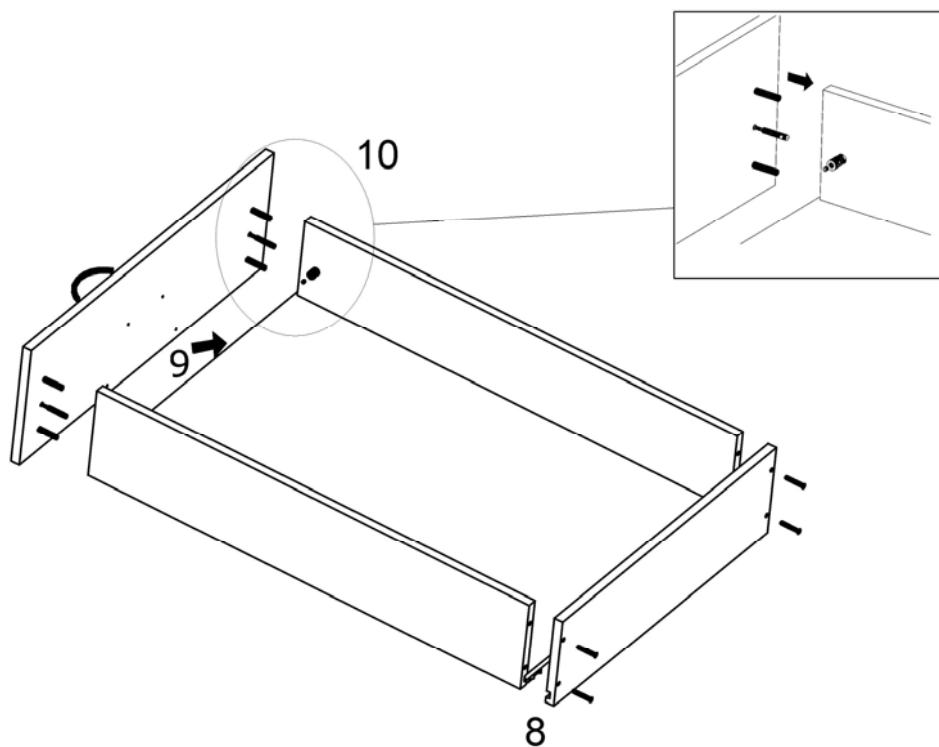
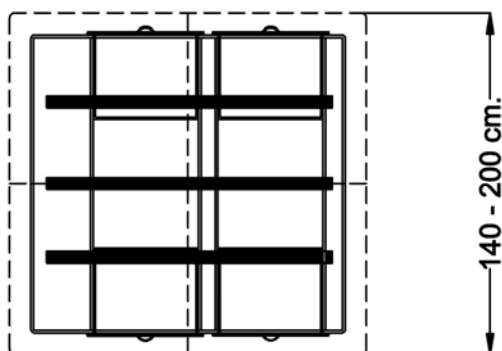
- Assemble the cabinets as shown with intermediate pieces at each end (1).
- The cabinets are connected with an intermediate piece. An equivalent intermediate piece is placed on the cabinets at the foot end (2).
- At the head end, fit 2 head end pieces which may vary in length depending on the length of the bed (3). The head end piece is always longer than that at the foot end.
- Fit the base with aluminum corners (4).
- If there is a headboard: fit the headboard fittings to the head end piece.
- Place the bearers in the milled grooves on the cabinet sides. Screw the centre bearer onto the cabinet sides (5).
- Position the stabilisers as shown in the drawing. With headboard (6). Without headboard (7).
- For fitting the base boards, see the instructions for the Akva box base.
- Fit the drawers by mounting the back piece of the drawer on the sides (8).
The bottom of the drawer is pushed into the milled grooves in the drawer sides (9).
Please note the pilot holes for the castors must be placed downwards.
- Fit the dowels and machine screws in the pilot holes in the drawer front and the connecting fitting house in the drawer sides.
Fasten the drawer front by securing it to the drawer sides and tightening the pinol screw (10). Mount the brackets on the drawer front.
- The castors are fitted in the pilot holes.



6



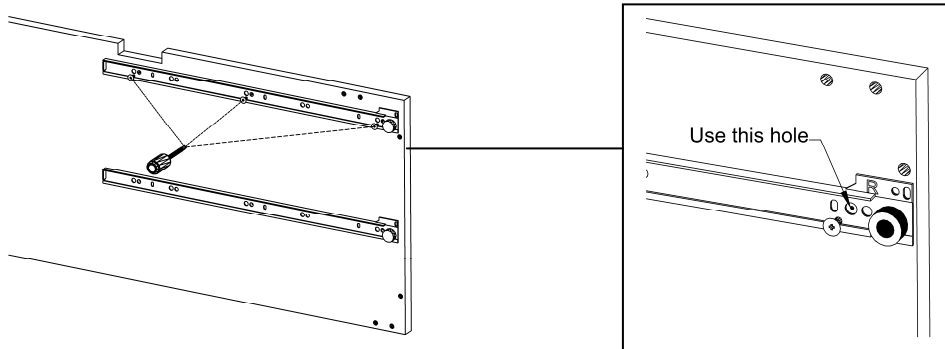
7



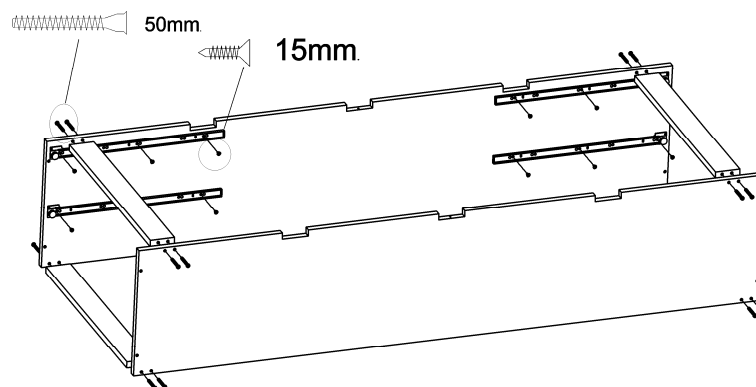
AKVA 8 BOX

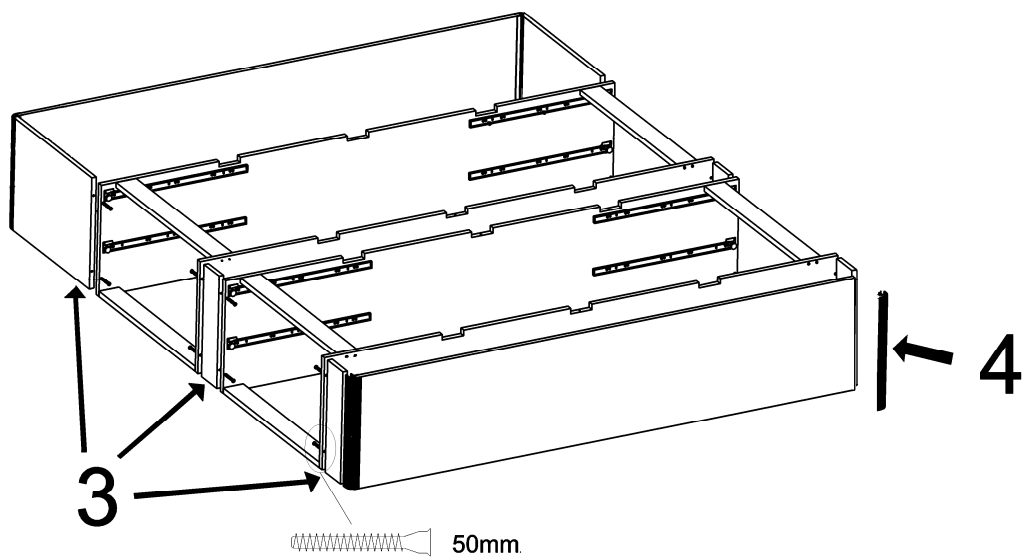
- Fit the rails on the cabinet sides (1) where 3 points are marked with holes. Use the holes indicated on drawing (1). Turn the wheels on the rails downwards. The rails fit together 2 by 2, one right and one left, the wheels turned downwards and the rails located at the same height (2).
- Assemble the cabinets as shown (2).
- The cabinets are assembled with an intermediate piece (3).
- Place one intermediate piece on the cabinets at the foot end (3).
- At the head end, fit 2 head end pieces which may vary in length depending on the length of the bed. Fit the base end with aluminium corners (4).
- If there is a headboard, fit the headboard fittings to the head end piece (5).
- Place the bearers in the milled grooves on the cabinet sides. Screw the centre bearer onto the cabinet sides (5).
- Assemble the drawers by putting down the drawer bottom inside the drawer sides; then screw the drawer back onto the metal sides (6). Please note that the drawer back is placed on top of the drawer bottom (6).
- Screw the drawer bottom onto the metal sides (6). Mount the brackets on the drawer front and the drawer bottom holders (6).
- You can adjust the height of the drawer front by turning the screw on the lock bracket (7). Please note that the height can only be adjusted when the screw is loosened (8).
- Position the stabilisers as shown in the drawing. With headboard (9). Without headboard (10).
- For fitting base boards: see the instructions for the Akva box base.

1

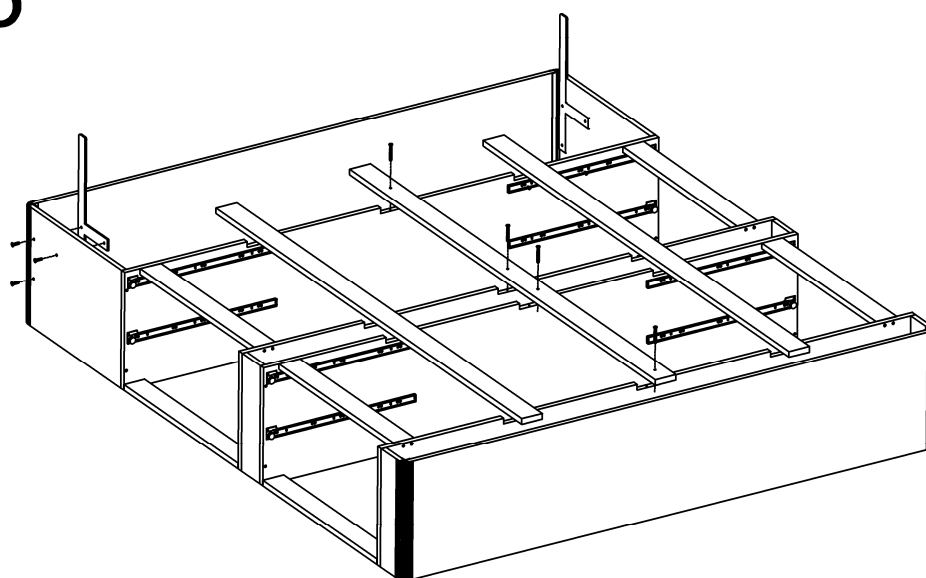


2

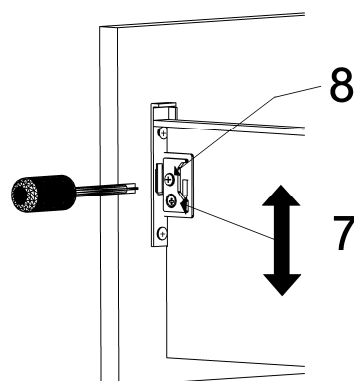
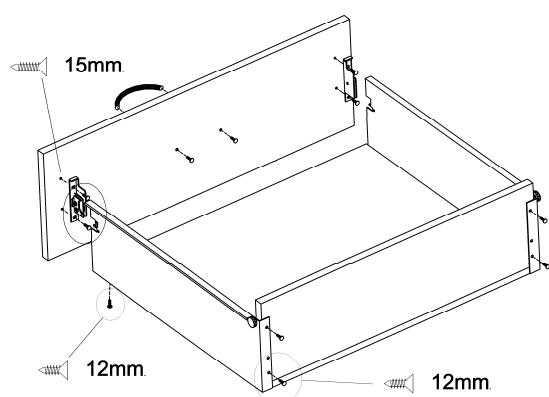


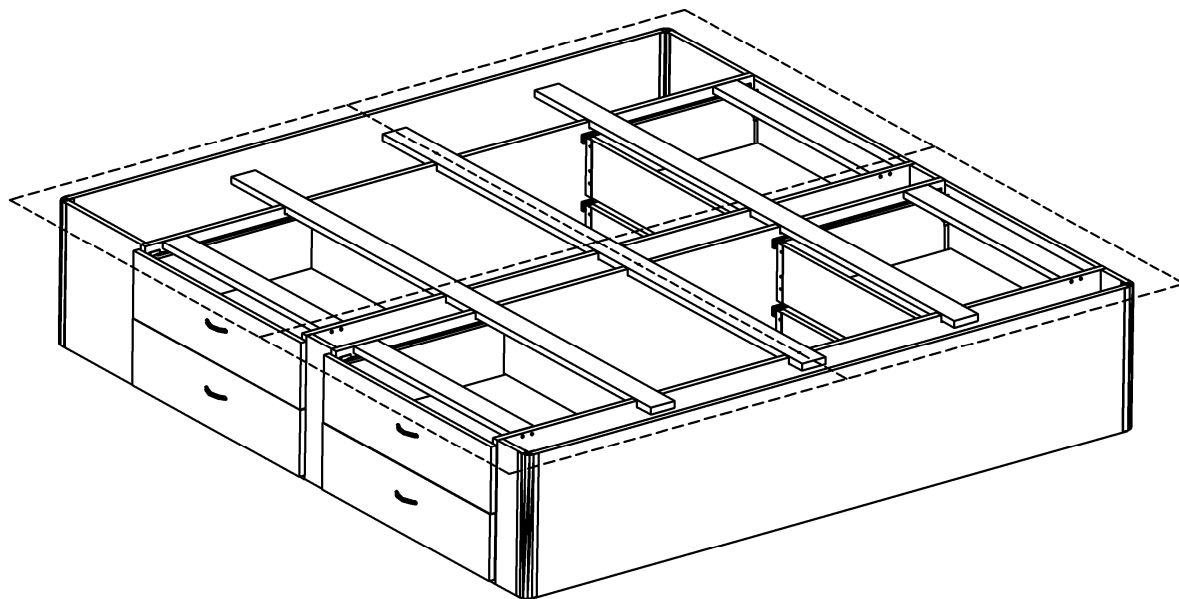


5



6

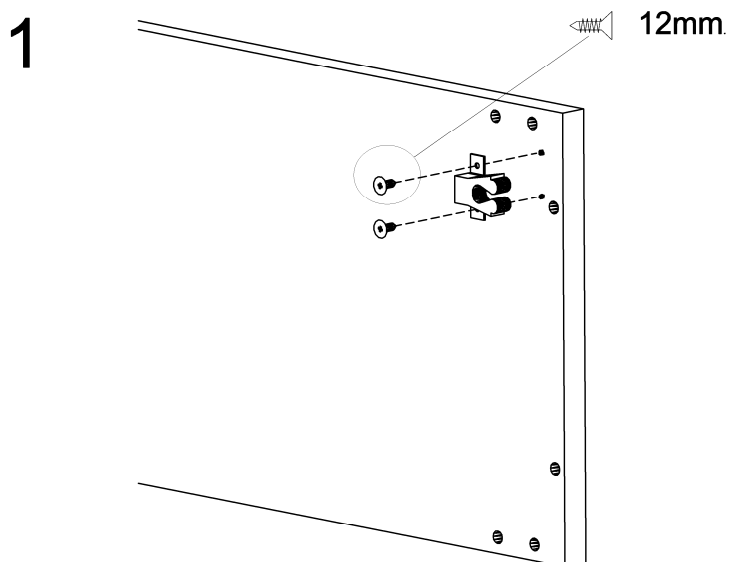




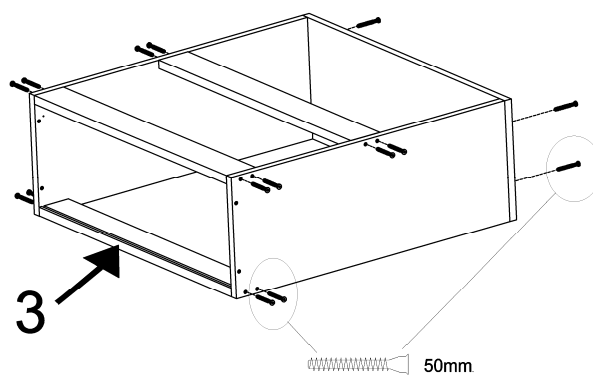
AKVA STORAGE BASE, SINGLE

If the base has storage space on only one side or is designed for a bed with a width of 90, 100 or 120 cm.

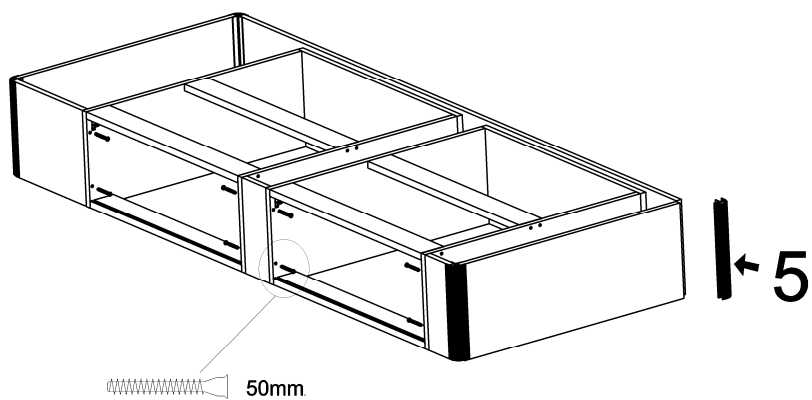
- Mount the roller locks on the cabinet sides where two points are marked with holes (1).
- Assemble the cabinet sides (2). Mount the spacer with the milled groove so that it is placed at the bottom of the cabinet. The groove should be closer to the front, facing upwards at the bottom of the cabinet (3).
- Assemble the cabinets with an intermediate piece (4).
- Place an intermediate piece on the cabinets at the leg end (4)
- At the head end, mount a head end piece (4). Attach the base using the aluminium corners (5)
- If the bed has a headboard: mount the headboard brackets on the head end piece (6).
- Mount the roller locks on the front (7).
- Insert the front holder in the pre-drilled holes on the front. Ensure that the tip of the holder is facing away from the front so that you have an opening that fits into the milled groove (7)
- The front is placed by tilting it into the groove and then lifting it up (10).
- Place the stabilisers as shown in the drawing. With headboard (8). Without headboard (9).
- For fitting the base boards: see the instructions for the Akva box base.



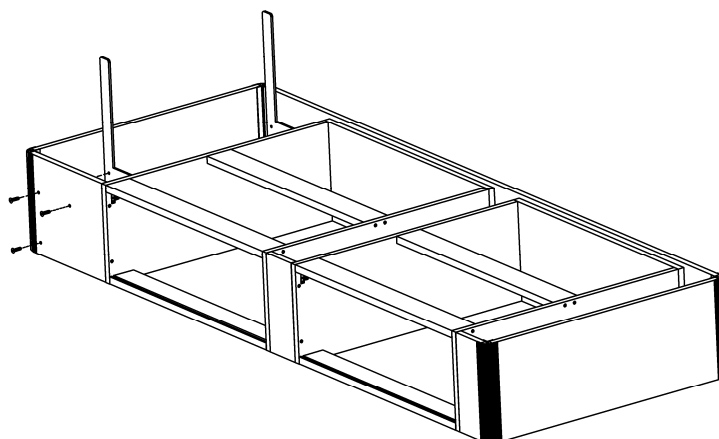
2



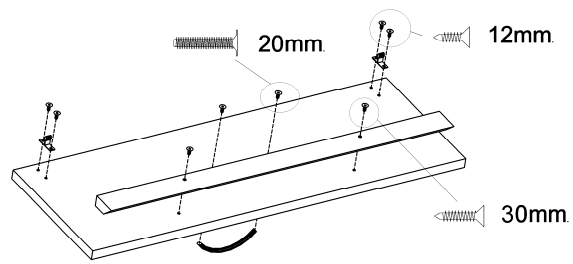
4



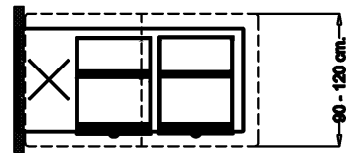
6



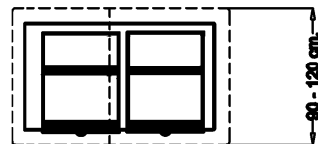
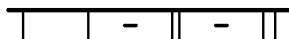
7



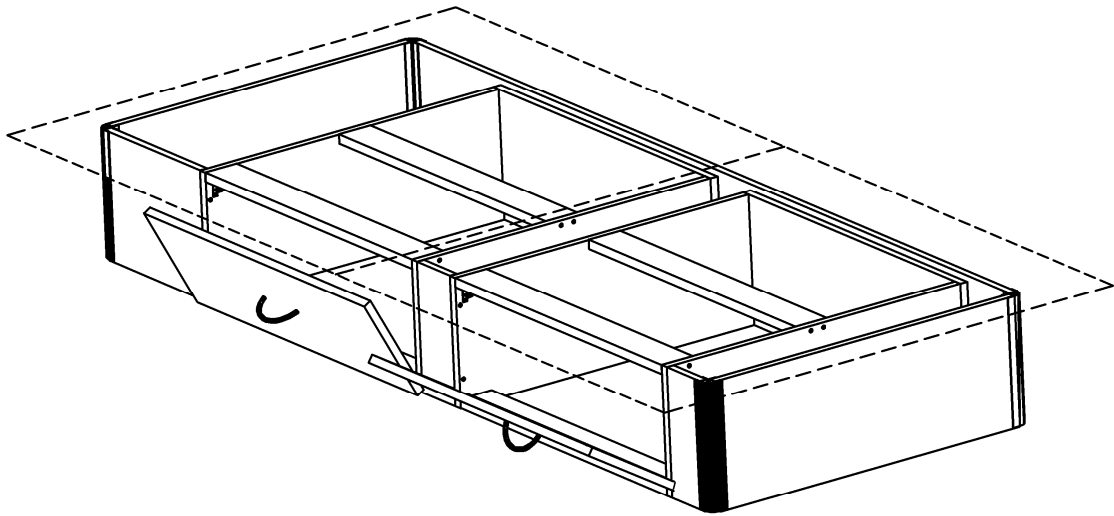
8



9



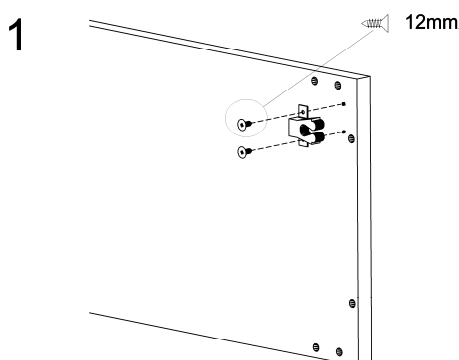
10



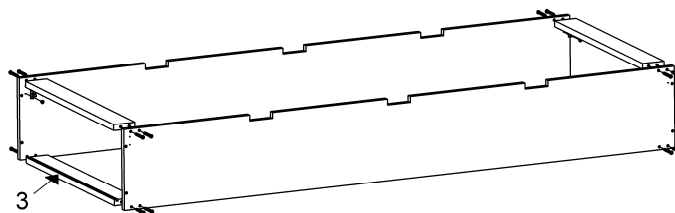
AKVA STORAGE BASE

- Mount the roller locks on the cabinet sides where this is marked with two holes (1).
- Assemble the cabinet sides (2). Mount the spacer with the milled groove so that it is placed at the bottom of the cabinet. The groove should be closer to the front facing upwards (3).
- Assemble the cabinets with an intermediate piece (4).
- Place an intermediate piece on the cabinets at the leg end (4).
- At the head end, mount the two head end pieces which may vary in length depending on the length of the bed (4). Attach the base end using the aluminium corners (5).
- If the bed has a headboard: mount the headboard brackets on the head end piece (6).
- Place the bearers in the milled grooves on the cabinet sides. Screw the centre bearer onto the cabinet sides (6).
- Mount the roller locks on the front (7).
- Insert the front holder in the pre-drilled holes on the front. Ensure that the tip of the holder is facing away from the front so that you have an opening that fits into the milled groove (7).
- The front is placed by tilting it into the groove and then lifting it up (8).
- Place the stabilisers as shown in the drawing. With headboard (9). Without headboard (10).
- For fitting the base boards: see the instructions for the Akva box base

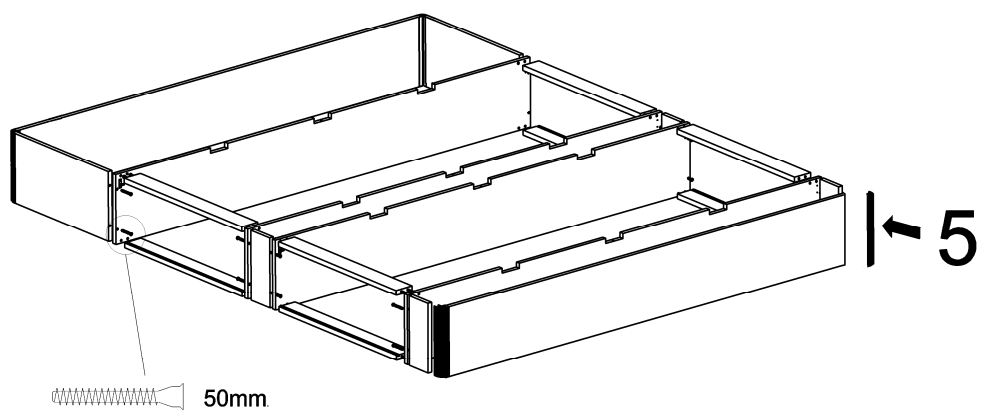
NB! If the base has storage space on only one side or is designed for a bed with a width of 90, 100 or 120 cm: see instructions for Akva storage base, single



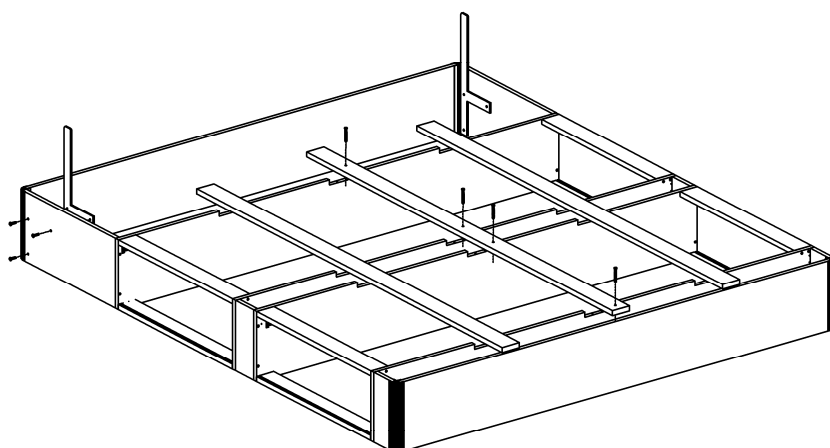
2



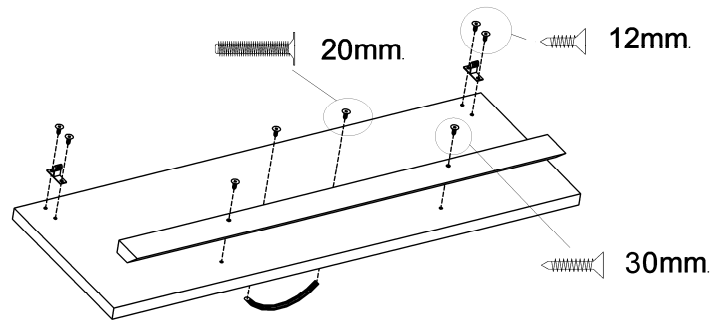
4



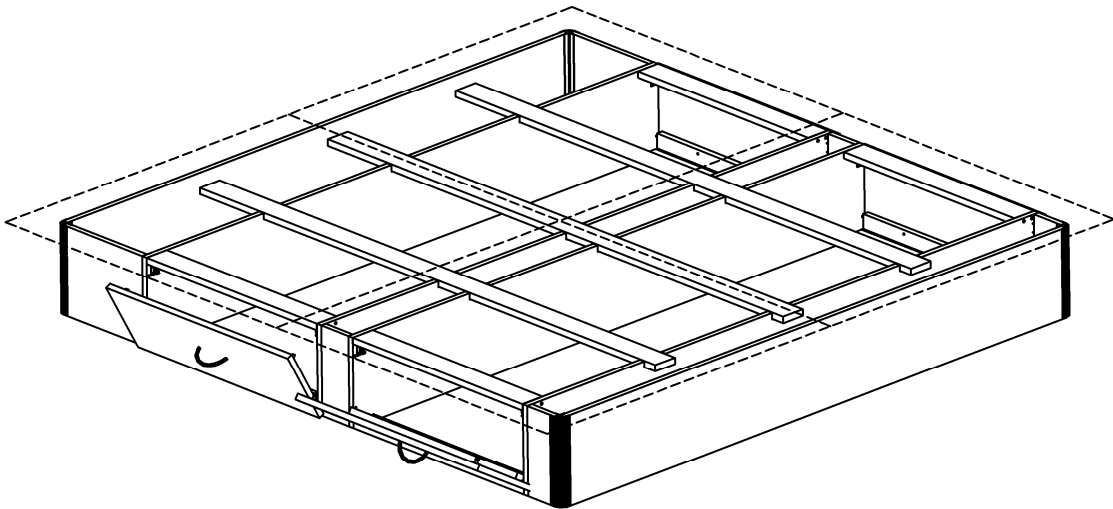
6



7



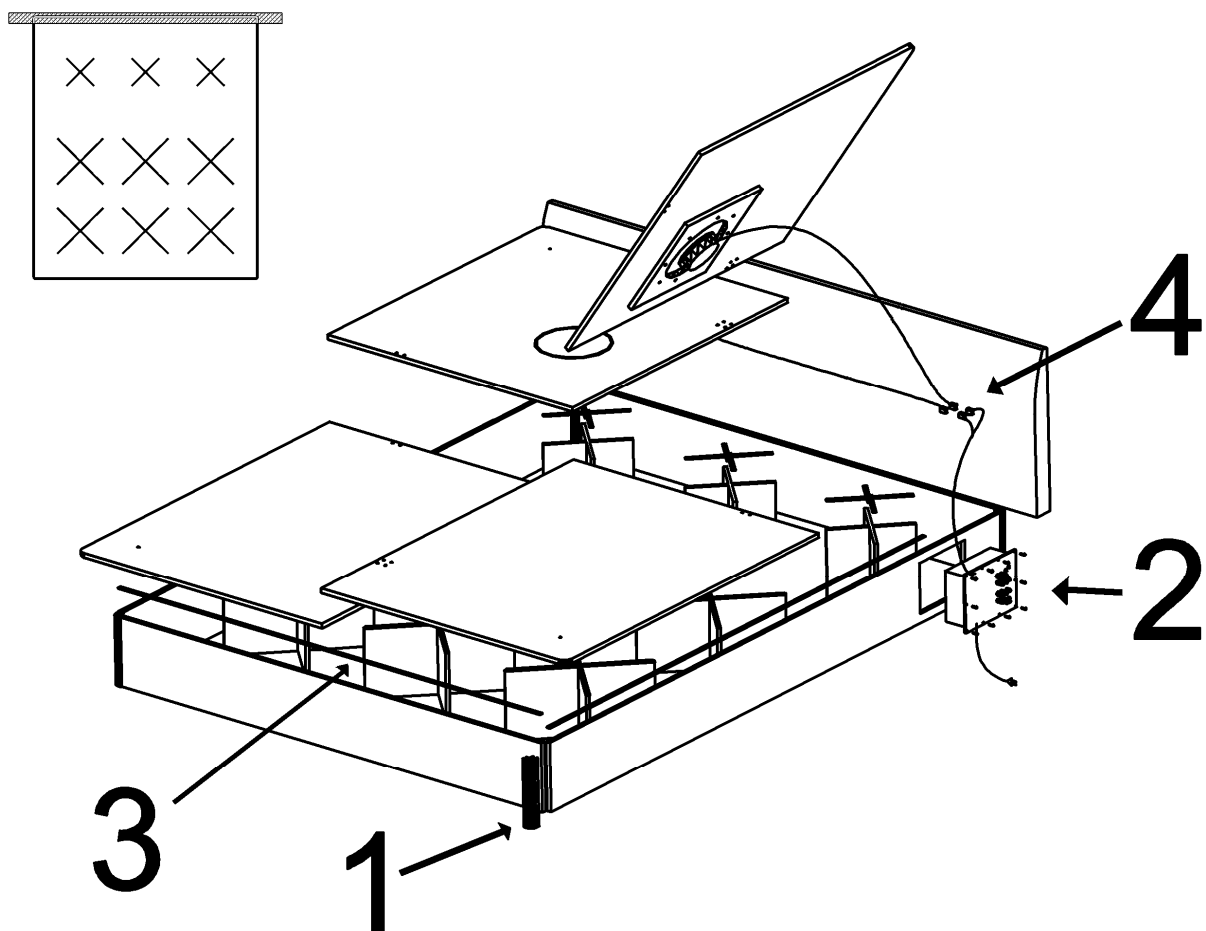
8



AKVA SOUND

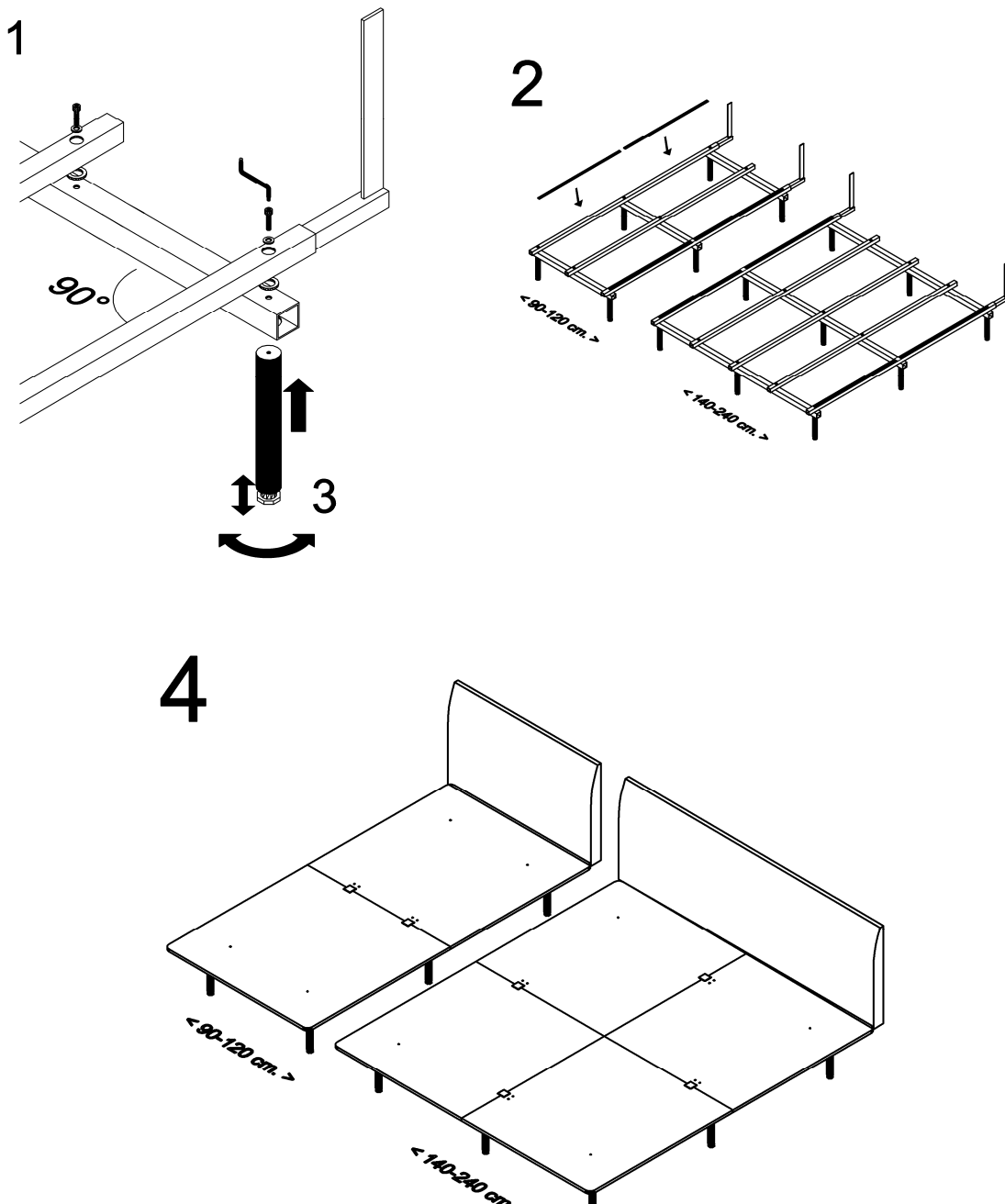
- Assemble the base frame with aluminium corners (1). The side with the opening for the amplifier can be placed on the left or right hand side of the bed depending on the side from which the system is to be operated (2).
- Position the stabilisers inside the base as shown in the instruction for Akva box.
- Provide the surfaces of the stabilisers and base frames with rubber tape. It will help fastening the base boards (3).
- The vibrators are already integrated in the base board and ready for use. Place the base boards with sound system at the head end and lead the connection cable to the opening in the base side. Be careful not to place the vibrators on the stabilisers. (The vibrators will be placed under the back.)
- Connect the cable from the vibrators with the cable from the amplifier (4) and fasten the amplifier module in the opening. Plug in the system and test whether the sound system is correctly installed and is functioning before the rest of the waterbed is mounted.

NB! Please be careful that the heating element does not cover the sound system in the base board.



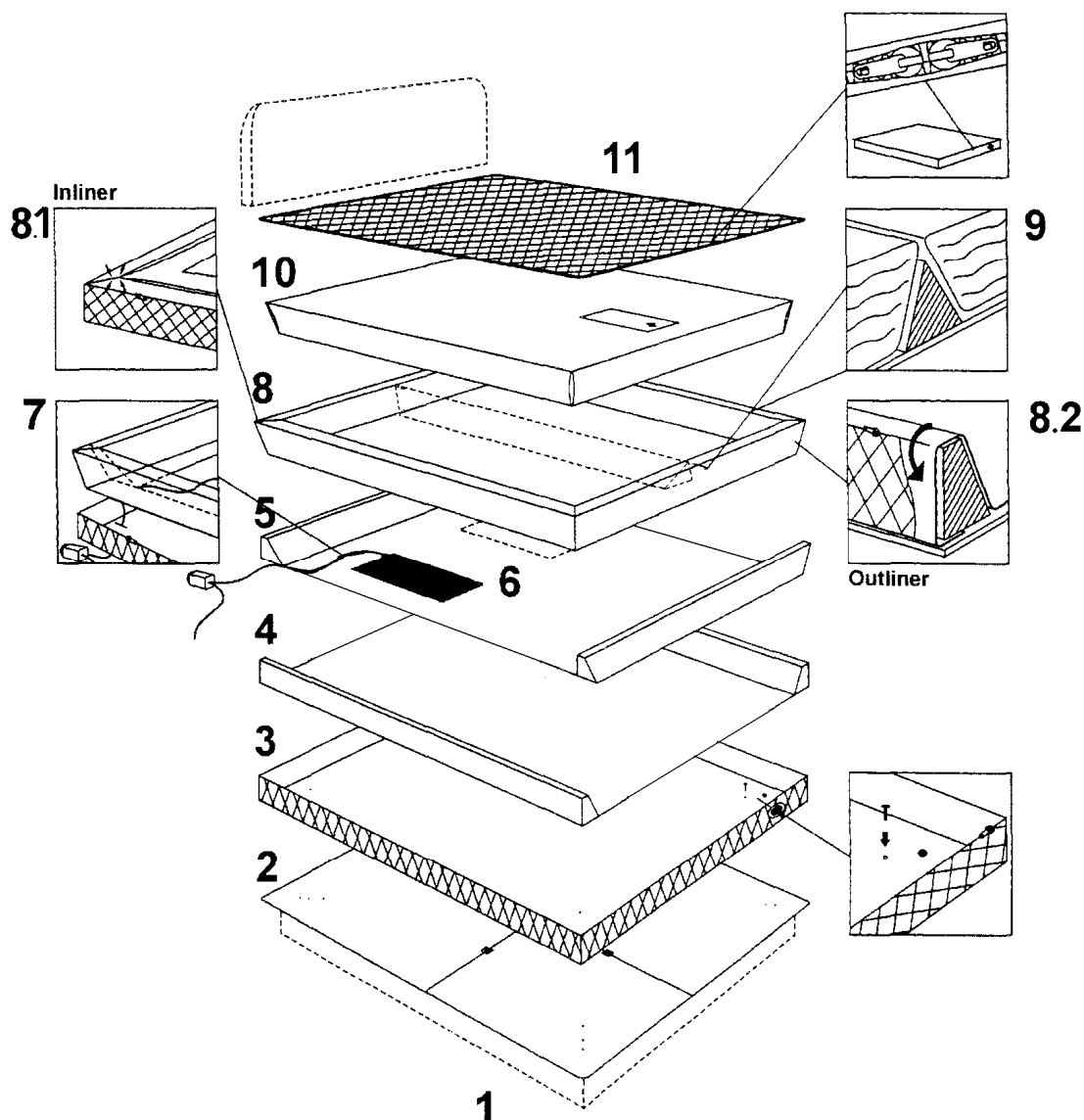
AKVA BENTI

- Fit the 4 corners of the frame (the strongest side board being at the bottom) and disperse the remaining bearers. Insert the screws through the two bearers and attach them loosely to the legs using two washers. Place the larger washer between the two bearers and the smaller washer between the lowermost bearer and the leg (1). If the bed has a headboard, place the bearer with the headboard brackets in the bearer before mounting the legs.
- Assemble the remaining side boards with or without legs (2).
- Provide the outer bearers with rubber tape (2).
- When the base has been assembled tighten all the screws. Fit headboard if provided.
- Place the base in its final position. Perpendicular positioning on the floor and optimum weight distribution are ensured when adjusting the setscrews at the bottom of the legs - maximum ± 30 mm - (3).
- Place the base boards on the Benti frame and attach with the four legs (4).
- Verify that the bottom plate touches the headboard (if any) or that the bottom plate is mounted evenly over the bed's head and foot ends and at the sides.



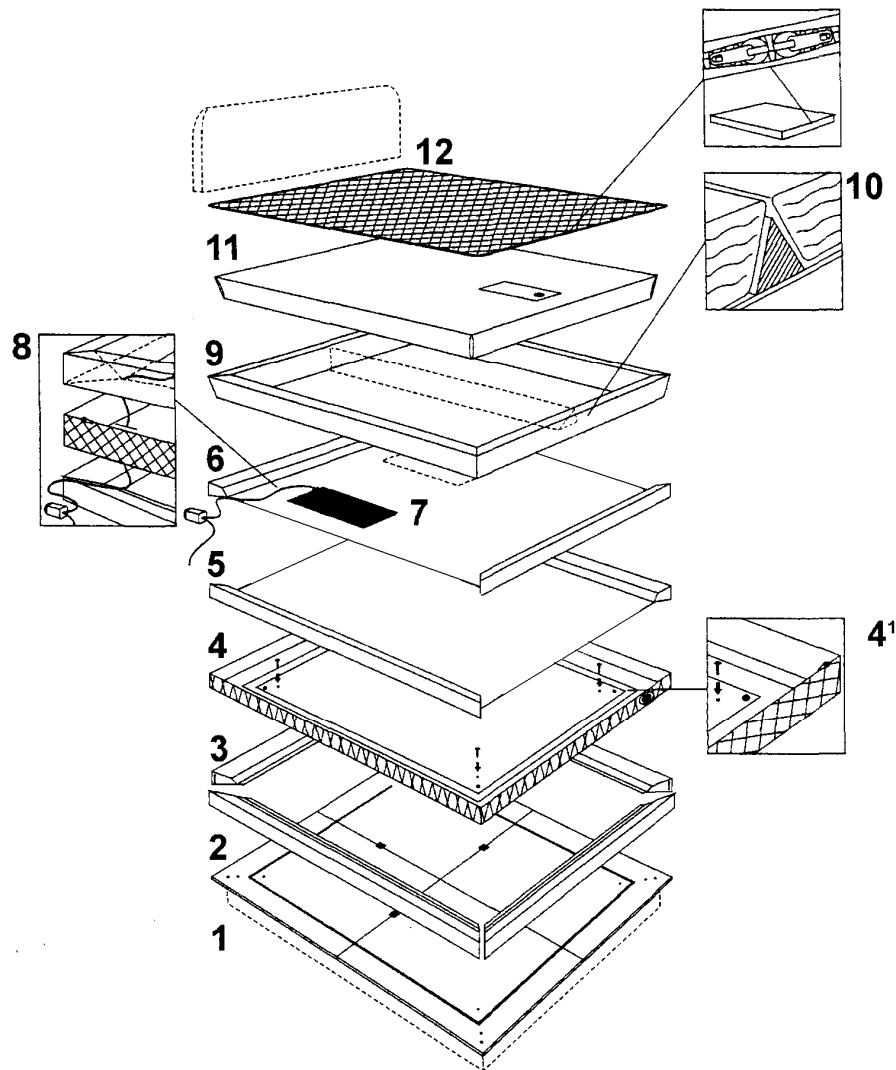
AKVA SOFT / AKVA JUNIOR

- Fit base frame (1) and (2). See instructions for Akva bases.
- Fit the bottom of the cover so that the Akva logo is located at the foot end (3). Remove the top, place the fixing paddles in the holes at the bottom of the cover, secure them by placing them in the holes of the base board.
- Place the side foam frames in the cover (4), then head and foot end foams (5).
- Position the heating element(s) (6). Feed out the tube under the foam frame, through the hole in the bottom of the cover and the bottom plate as shown on drawing (7). See the instructions for the Akva Vital Electronic heating elements before fitting them.
- Fit the safety liner (8). The safety liner is supplied in two variants: inliner (8.1) and outliner (8.2).
- If it is a bed with two water mattresses, place the foam or water divider in the centre (9) after fitting the safety liner.
- Place the water mattress in the safety liner (10). See the instructions for water mattresses.
- After filling with water, remove the air and add Long Life (water disinfectant.) Zip the top of the cover to the bottom of the cover (11). See also instructions for cover.



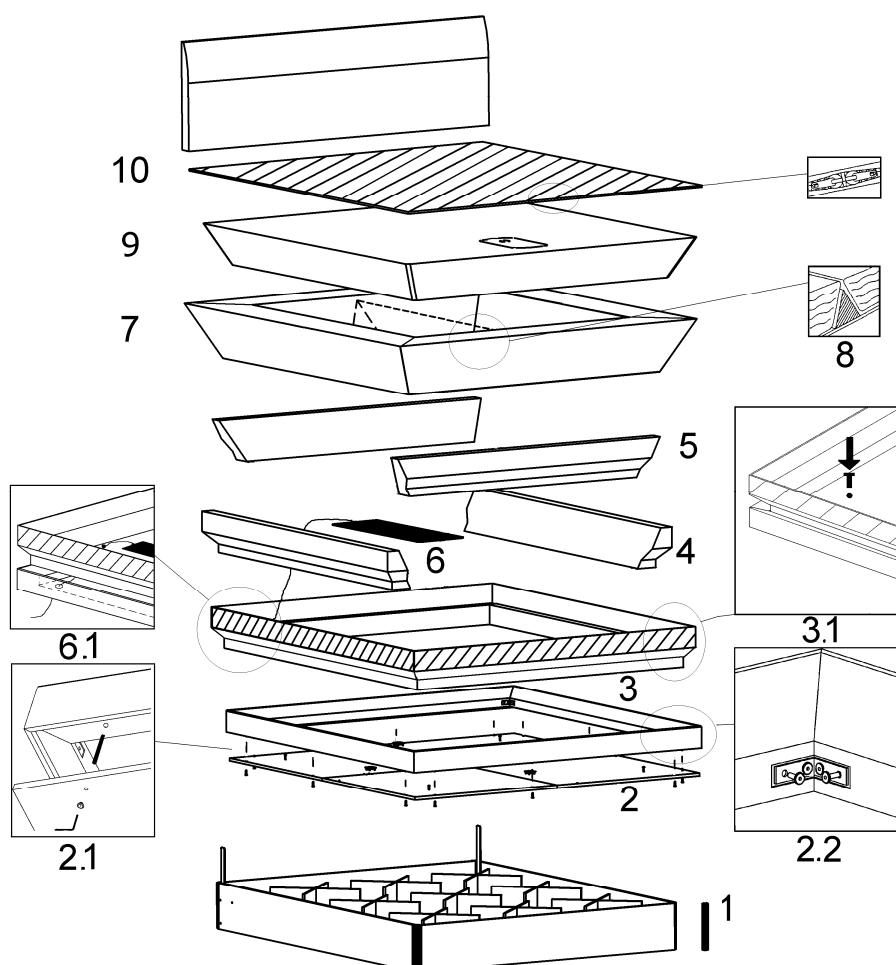
INSIDE

- Fit the base frame (1) and (2). See instructions for Akva bases.
- Fit the foam frame (3) by securing the fastening tape on the foam frame to the fastening tape on the base board. The edge of the foam frame must be aligned to the edge of the base board. Assemble the corners of the foam frame with fastening tape.
- Fit the bottom of the cover so that the AKVA logo is placed at the foot end (4). Remove the top, place the fixing paddles in the holes at the bottom of the cover and secure them by inserting them in the holes in the base board.
- Place the side foam frames in the cover (5), then head and foot end foams (6).
- Place the heating element(s) (7). Feed out the tube under the foam frame, through the hole in the bottom of the cover and the bottom plate as shown on drawing (8). See the instructions for Akva Vital Electronic heating elements before assembling them.
- Fit the safety liner (9). The safety liner is supplied in two variants: inliner 9.1 or outliner 9.2.
- If it is a bed with two mattresses, place the foam or water divider supplied in the centre of the bed after the safety liner is fitted.
- Place the water mattress in the safety liner (11). See instructions for water mattresses.
- After filling with water, remove the air and add Long Life (water disinfectant.) Zip the top of the cover to the bottom of the cover (12). See also instructions for cover.



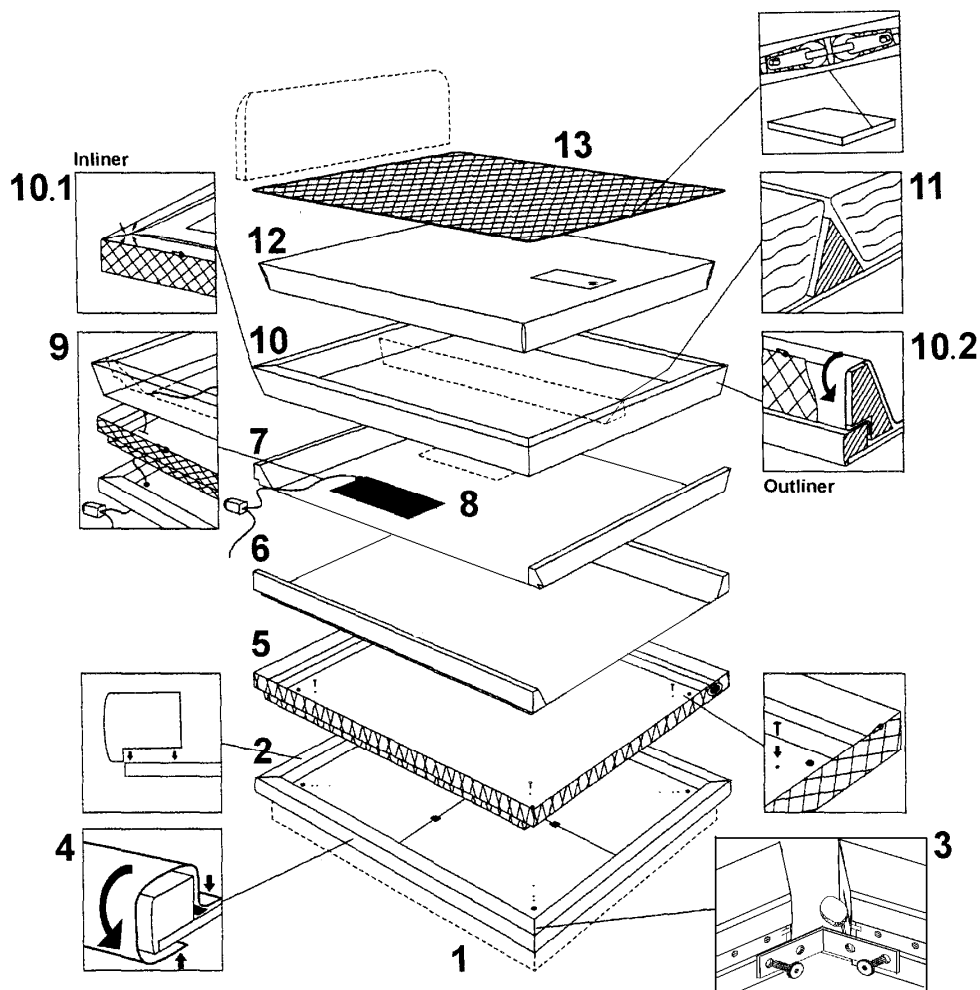
ALLROUND

- Fit the base frame (1). See instructions for Akva bases.
- Fit the wooden frame by attaching the threaded pin approx. 4 mm into the bushing on the underside of the wooden frame. Place the wooden frame on the base boards (2). Fasten the metal heads loosely on the threaded pin (2.1). Join the wooden frames one by one with angle brackets. Fasten the screws, begin with the screws closest to the joint of the corners (2.2). Fasten the screws on the underside of the base boards.
- Fit the bottom of the cover so that the AKVA logo is located at the foot end (3). Remove the top, place the fixing paddles in the holes at the bottom of the cover and secure them by inserting them in the holes in the base board.
- Place the side foam frames in the cover (4), then head and foot end foams (5).
- Place the heating element(s) (6). Feed out the tube under the foam frame, through the hole in the bottom of the cover and the bottom plate as shown on drawing (6.1). See the instructions for Akva Vital Electronic heating elements before assembling them.
- Fit the safety liner (7). The safety liner is supplied in two variants: inliner 9.1 or outliner 9.2.
- If it is a bed with two water mattresses, place the foam or water divider supplied in the centre of the bed after the safety liner is fitted (8).
- Place the water mattress in the safety liner (9). See instructions for water mattresses.
- After filling with water, remove the air and add Long Life (water disinfectant.) Zip the top of the cover to the bottom of the cover (10). See also instructions for cover.



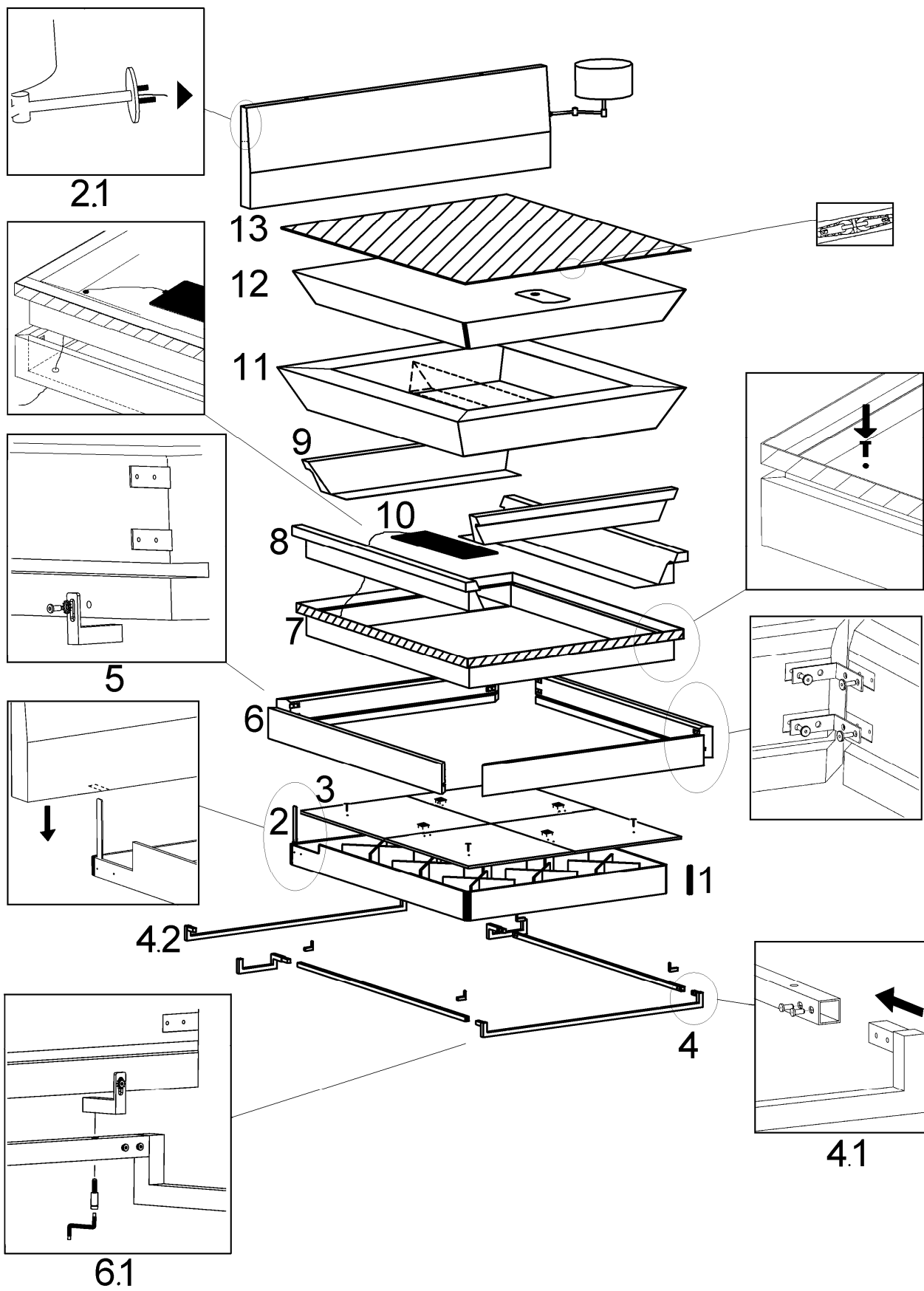
AKVA DECO

- Assemble base (1) and (2). See instructions for Akva bases.
- Place the wooden frame on the base boards (2). Join the wooden frames loosely with angle brackets (3). When the frame is assembled, tighten the screws.
- Fit Deco-cover if provided (4). The join must be at the head end. Very carefully position the corners of the cover on the outside of the corners of the wooden frame. If with headboard: be careful when lifting base boards once the cover is secured at the head end. Secure the cover with fastening tape one side at a time.
- Fit the bottom of the cover so that the Akva logo is located at the foot end (5). Remove the top, insert the fixing paddles in the holes in the bottom of the cover and secure them by inserting the paddles in the holes in the base board.
- Place the side foam frames in the cover (6), then head and foot end foams (7).
- Place the heating element(s) (8). Feed out the tube under the foam frame, through the hole in the bottom of the cover and the bottom plate as shown on drawing (9). See the instructions for Akva Vital Electronic heating elements before assembling them.
- Fit the safety liner (10). The safety liner is supplied in two variants: inliner (10.1) or outliner (10.2).
- If it is a bed with two water mattresses, place the foam or water divider supplied in the centre of the bed after the safety liner is fitted.
- Place the water mattress in the safety liner (12). See instructions for water mattresses.
- After filling with water, remove the air and add Long Life (water disinfectant.) Zip the top of the cover to the bottom of the cover (13). See also instructions for cover.



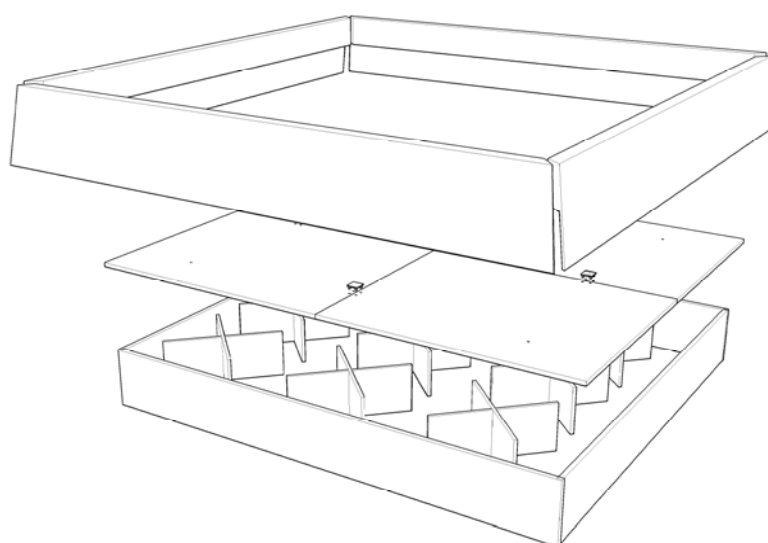
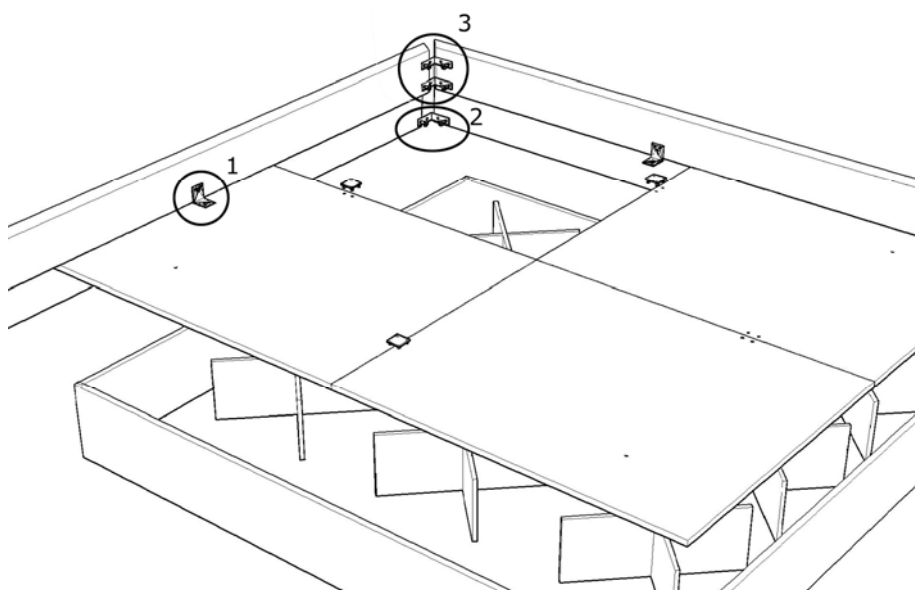
AKVA VEGA

- Assemble the base frame with aluminium corners (1).
- Fit headboard fittings if the bed has a headboard (2).
- Mount the headboard by placing the openings at the bottom of the headboard on the headboard fittings (2).
- If headboard with integrated lamps, secure the lamps from the inside of the headboard (2.1). Remember to connect the power.
- Position the stabilisers inside the base frame. See instructions for Akva Box.
- Position the base boards on the base frame. Assemble the base boards with the four legs (3). See instructions for Akva Box if necessary.
- Assemble the silver lacquered frame with the screws (4.1). Position the frame around the base.
- If bed with headboard, fit the silver lacquered frame for headboard at the head end. If bed without headboard, the silver lacquered frame is identical in head- and foot end (4.2).
- Before assembling the upholstered bed frame, fit the small chromed angle fittings loosely in the pre-drilled holes with the washer (5).
- Position the bed frame on the bottom plate where the bottom plate fits the groove (6). Assemble with angle fittings. Screw the angle fittings loosely in the four corners. After assembling the bed frame, fasten the screws.
- Mount the silver lacquered frame on the bed frame by screwing them on to the small chromed angle fitting (6.1). The angle fitting can be adjusted while fastening the silver lacquered frame.
- Secure the frame to the base plate with angle brackets.
- Fit the bottom of the cover so that the Akva logo is placed at the foot end (7). Remove the top, place the fixing paddles in the holes at the bottom of the cover; secure the cover by placing the paddles in the holes of the bottom plate.
- Place the side foam frames in the cover (8), then head and foot end foams (9).
- Place the heating element(s) (10). Feed out the tube under the foam frame and through the hole in the bottom of the cover and the bottom plate as shown on the drawing. See instructions for Akva Vital Electronic heating elements before assembling them.
- Fit the safety liner (11).
- If it is a bed with two water mattresses, place the foam or water divider supplied in the centre of the bed (11) after fitting the safety liner.
- Place the water mattress in the safety liner (12). See instructions for water mattresses.
- After filling with water, remove the air and add Long Life (water disinfectant.) Zip the top of the cover to the bottom of the cover (13). See also instructions for cover.



AKVA MIRA WITHOUT HEADBOARD

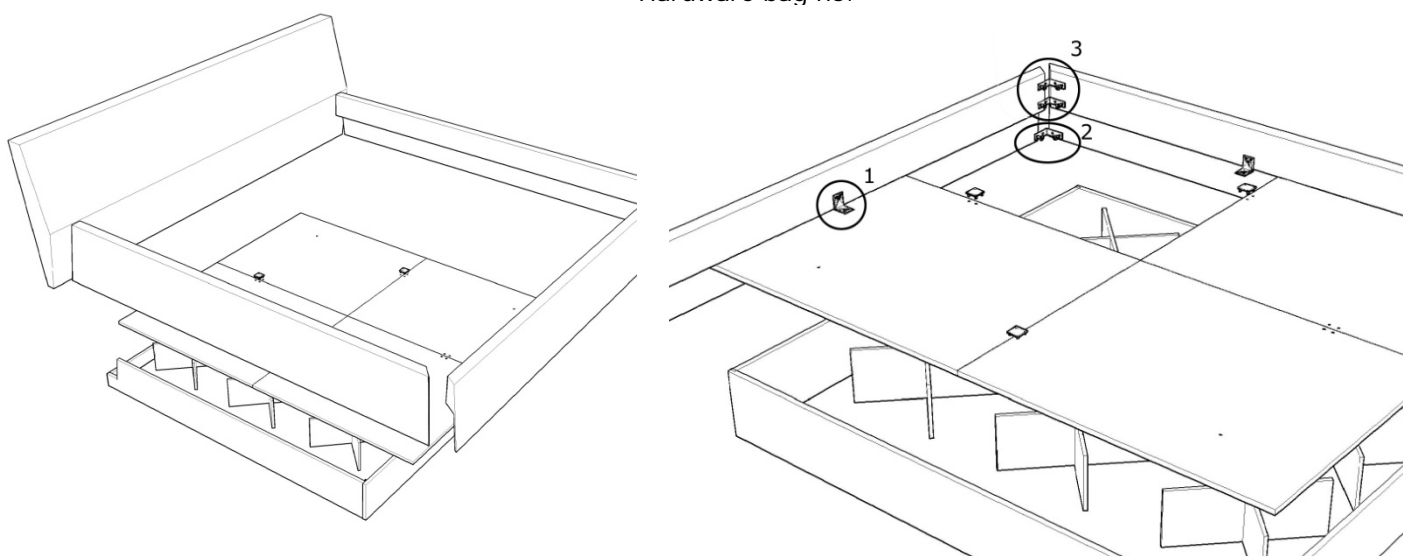
- Assemble the base, position stabilisers and base boards. See instructions for Akva Box.
- Fit the Mira frame by fastening the angle brackets loosely on the upholstered side pieces. Loosely fit the upholstered foot and head end pieces to the side pieces. Hardware bag no. 3 is to be used above the base boards, bag no. 2 below the base boards. Fasten the corners of the frame one by one. Begin with the screws farthest in.
- When the frame is tightened, it is fastened to the base board with angle brackets in the middle of each upholstered piece (Hardware bag no. 1.)
- Fit the rest of the bed. See instructions for HARDSIDE and INSIDE respectively, beginning from item (3.) When Inside version: the lower foam is only to be placed on the base boards, it is not to be secured with fastening tape.



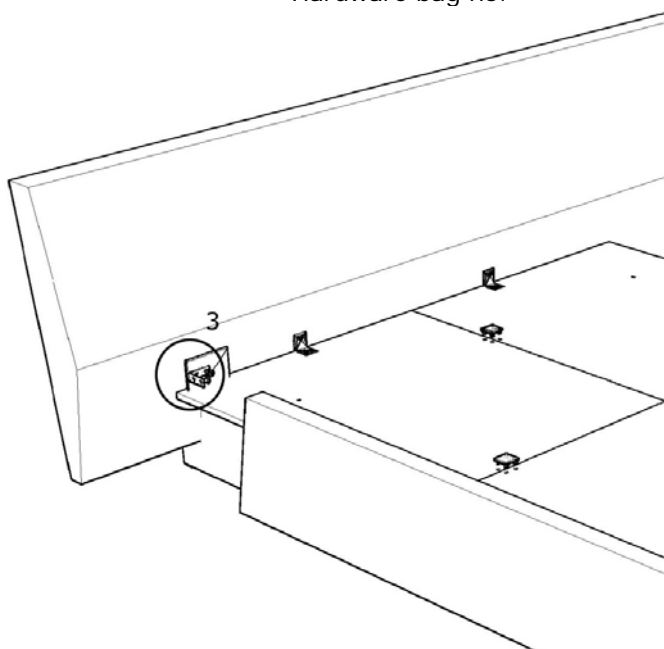
AKVA MIRA WITH HEADBOARD

- Assemble the base, position stabilisers and base boards. See instructions for Akva Box.
- Fit the Mira frame by fastening the angle brackets loosely on the upholstered side pieces. Loosely fit the upholstered foot piece to the side pieces. Hardware bag no. 3 is to be used above the base boards, bag no. 2 below the base boards.
- Position the headboard on the base and secure it to the frame with angle brackets. Fasten the corners of the frame one by one. Begin with the screws farthest in.
- When the frame is tightened, it is fastened to the base board with angle brackets in the middle of each upholstered piece (Hardware bag no. 1.)
- The headboard is secured to the base boards with angle brackets (Hardware bag no. 1)
- Fit the rest of the bed. See instructions for HARDSIDE and INSIDE respectively, beginning from item (3.) When Inside version: the lower foam is only to be placed on the base boards, it is not to be secured with Velcro tape.

Hardware bag no:

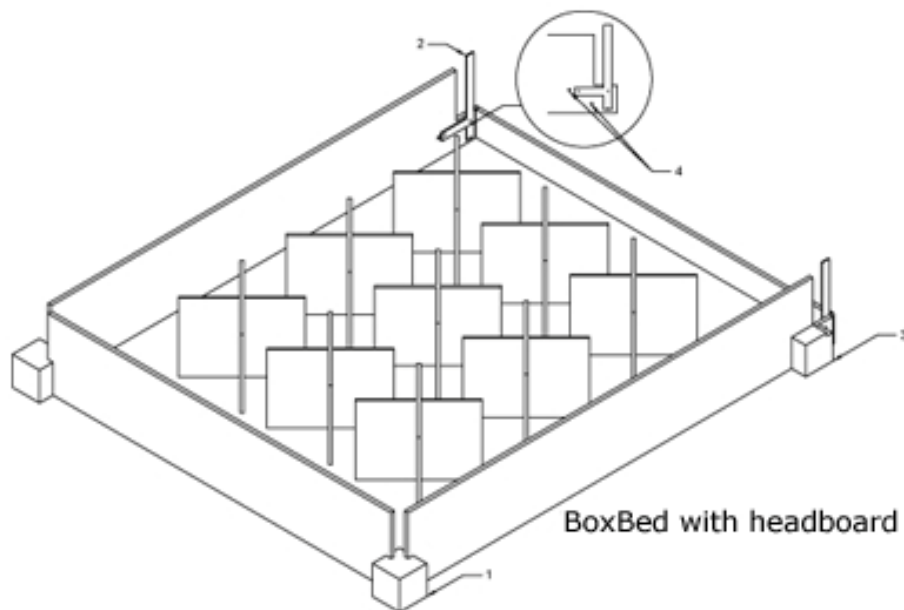
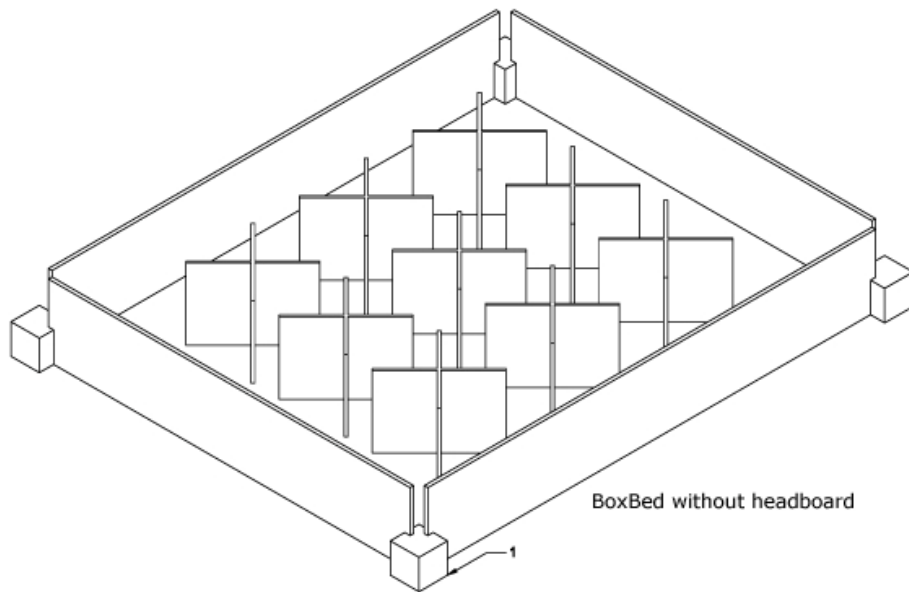


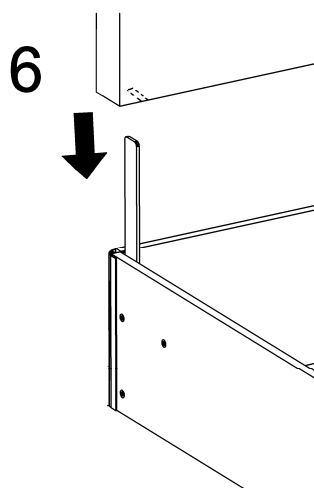
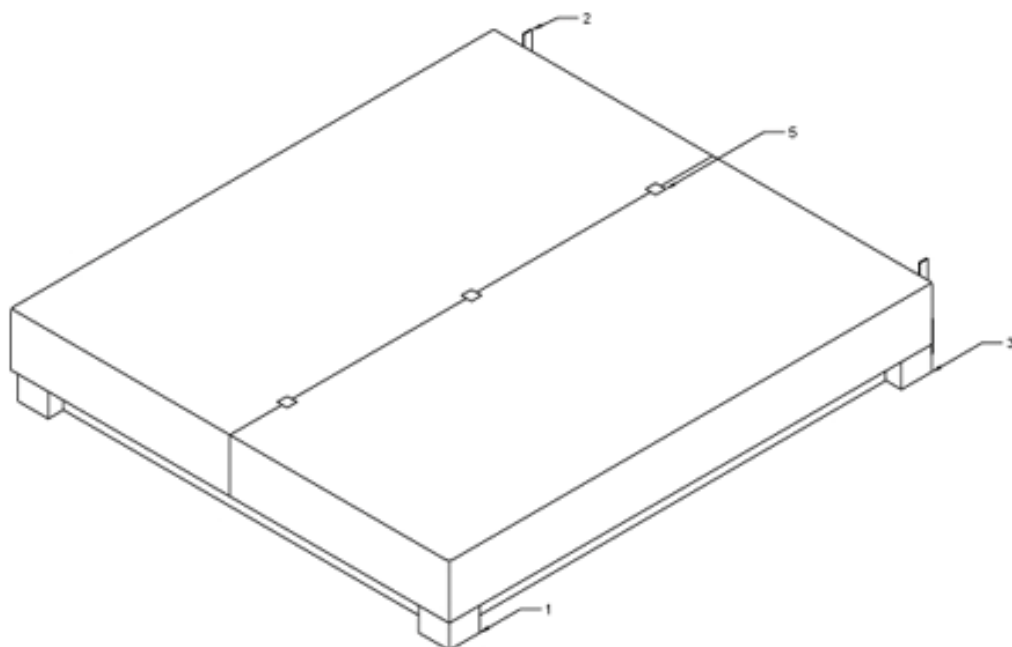
Hardware bag no:



AKVA BOXBED

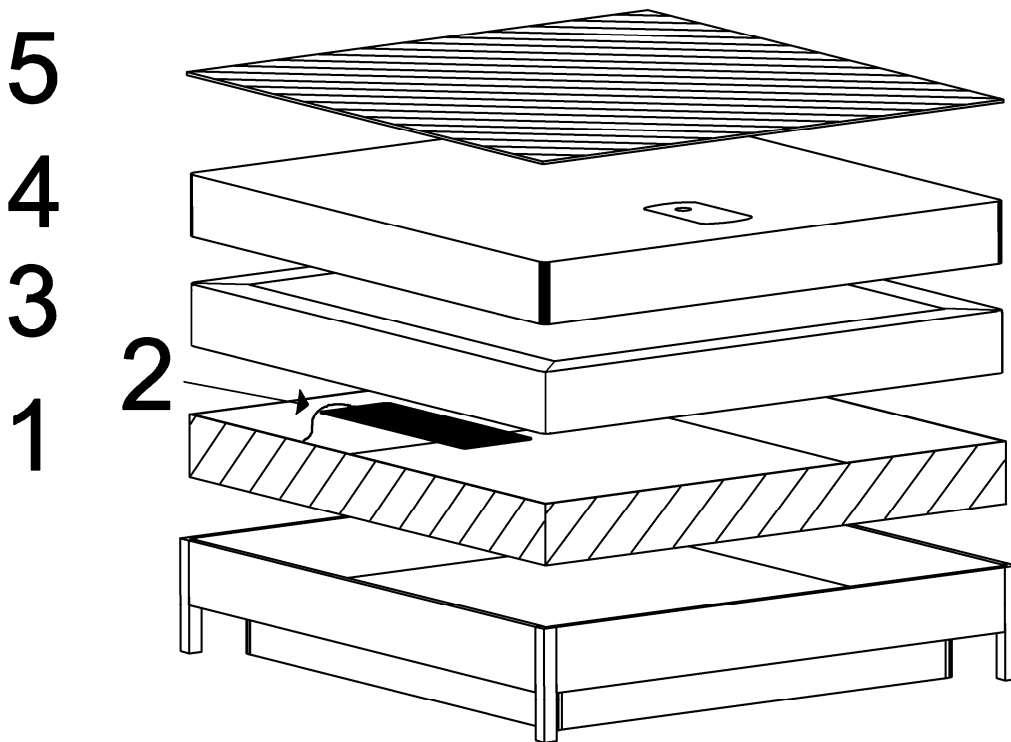
- Base sides and the foot end piece are fitted with the solid wooden legs (1). If the bed is without headboard, this applies for the head end as well.
- With headboard: fit headboard fittings in the head end of the base sides (2). Fit the solid wooden legs in the base side (3). Please note: screw from the inside. (4).
- Position the stabilisers inside the base frame as shown in the instructions for AKVA BOX (item 3 and 4)
- Position the base boards on the base frame. Secure with the fixing paddles. Please note: the upholstered frame is to be on the outside of the solid wooden legs (5).
- With headboard: fit the headboard by dropping the openings in the bottom of the side down over the fittings (6).
- Fit the upper half of the bed. See instructions for AKVA SOFT / AKVA JUNIOR beginning from item (3).





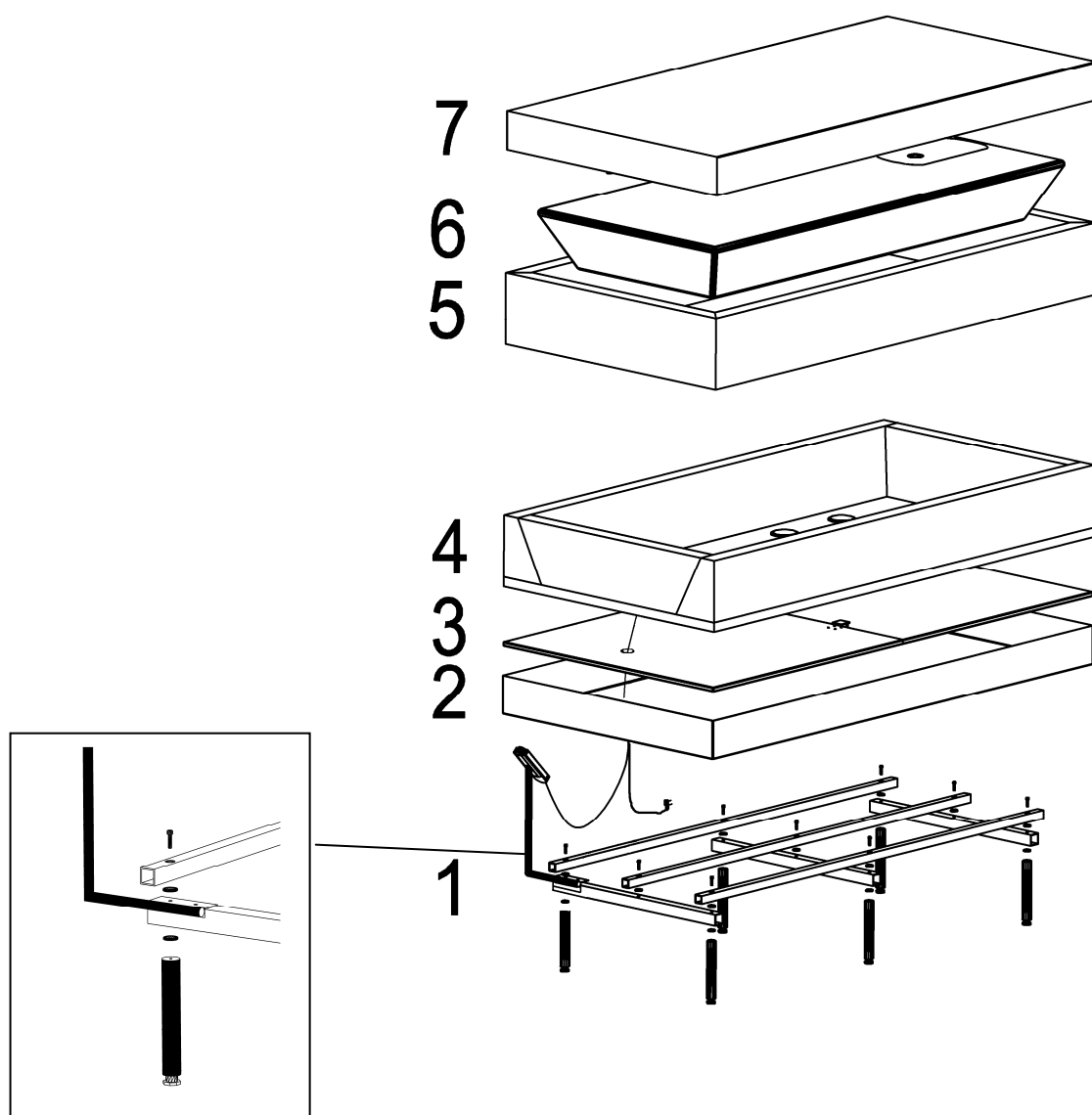
HARDSIDE

- Fit the cover in the frame (1). Remove the top, insert the fixing paddles in the holes in the bottom of the cover and secure them by inserting the paddles in the holes in the base board.
- Place the heating element(s) (2). Feed out the tube through the cover bottom and the base plate. See the instructions for Akva Vital Electronic heating elements before assembling them.
- Fit the safety liner and ensure that it does *not* fold at the point where it covers the heating element (3).
- Place the water mattress in the safety liner (4). See instructions for water mattresses in the section spare parts.
- If it is a bed with two water mattresses, place the foam or water divider supplied in the centre of the bed after the safety liner is fitted.
- After filling with water, remove the air and add Long Life (water disinfectant.) Zip the top of the cover to the bottom of the cover (5). See also instructions for cover.



AKVA WELLNESS

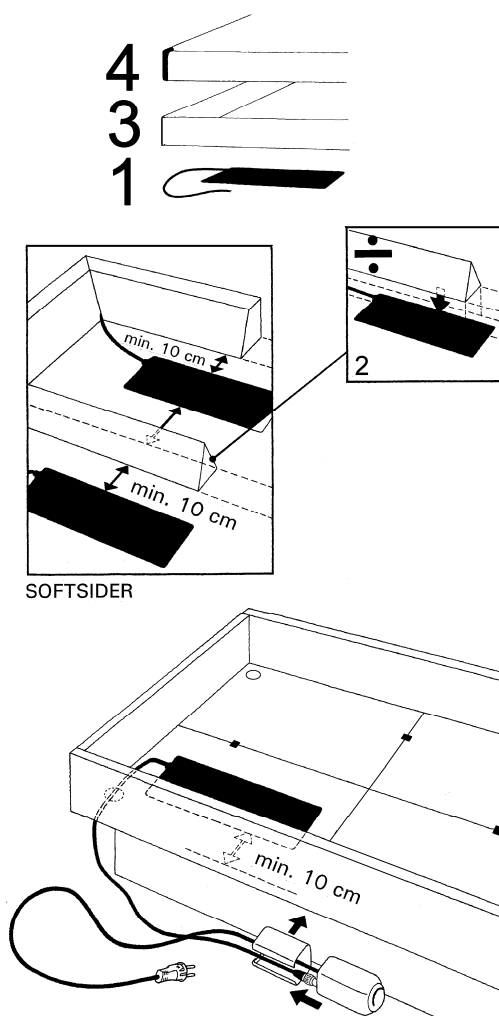
- Mount the Benti base (1). See the instructions for Benti bases.
- Mount the power receptacle and holder for the vibration massage control on the Benti base. Can be mounted on either the left or right side.
- Install the bottom of the bedcover so that the zipper is joined at the head end (2). Remove the top.
- Place the base plate at the bottom of the bedcover (3).
- Place the foam frame on top of the bottom plate (4).
- Pull out the cables from the heating element and massage units as shown in the drawing (4). See the instructions for Akva Vital Electronic heating element before assembling it.
- Mount the safety liner (5).
- Place the water mattress inside the safety liner (6). See the instructions for water mattresses.
- After filling the mattress with water, ventilating it and adding Long Life (water disinfectant) zip the bedcover top onto the bottom (7). See also the instructions for the bedcover.
- See also separate instructions for the massage unit.



AKVA VITAL ELECTRONIC, max. 250-260 W / 230 - 240 V~

Read these instructions carefully before assembling and using the heating system.

- Position the heating element (1) flat on the bottom of the bed.
- Ensure that no sharp edges damage the heating element.
- Avoid placing the element over differences in level (2).
- The heating element must be at least 10 cm from the side of the bed/side of the foam.
- There must be no foam placed on top of the heating element.
- Place the safety liner (3) directly over the heating element (1) and ensure that it does *not* fold at the point where it covers the heating element.
- Place the water mattress (4) in the safety liner (minimum dimensions 40 x 140 cm)
- **The heating element must not be switched on until the mattress has been filled to the normal level.**
- After setting the temperature install the protective cover to avoid accidental changes to the setting.



Important

- Remove the plug from the socket before draining the mattress.
- Do not pull the cables. If they are damaged the heating system must be discarded.
- Install the control box with the temperature setting away from the water mattress, e.g. on the base of the water bed, since the box is not watertight.
- The Akva Vital heating system must only be used as a unity.

Operating procedure

- Connect the heating system to 230 – 240 V ~.
- Set the control knob to the desired temperature. Note that it takes 1 – 2 days to heat a cold bed. Then the temperature can be fine-tuned. Remember that the temperature has not been reached until the indicator lights up green.
- The regulator operates with 11 steps and a regulating accuracy of less than $\pm 0.25^{\circ}\text{C}$. A red light in the indicator means that the temperature is being increased, and a green light indicates that the temperature set has been reached i.e. the heating is being discontinued or kept at a constant level.

The indicator lamp in the control box of the heating system therefore shifts during normal operation between green and red. The heating system measures repeatedly every 5 seconds. This is also the response time for variations in settings, status changes, etc.

12-hour operation –

After the mattress has heated up, the heating element can be changed to 12-hour operation. If the heating element is switched off when the bed is being used, proceed as follows:

- Turn the setting knob down to [sun/moon] for 5 seconds. The indicator will light up yellow to confirm.
- Turn the setting knob back to the desired temperature.

The heating system will now be switched off for 12 hours, after which it will heat for 12 hours, then switch off again for 12 hours and so on.

The indicator lamp in the control box of the heating system shifts between green and yellow

If you want to interrupt 12-hour operation, proceed as follows:

- Switch off the power to the heating system for a short time, or turn the setting knob down to [sun/moon] for 5 seconds.

After power interruptions the heating system will restart in standard 24-hour operation.

Status indication

The light in the setting knob indicates the status of the heating system or any error conditions according to the diagram below. If the light in the setting knob flashes one colour rhythmically, it means that there is a fault in the heating system. See bottom line in the diagram below.

The heating system is designed for use in an earthed installation. If this is no such socket, or if the earthing is inadequate, a tickling sensation can be felt when touching the mattress. Contact the local installer. The energy consumption of a water bed depends on the heat loss of the mattress. This means that the temperature of the water bed and daily making of the bed have a high influence on the energy consumption of the heating system. If care is exercised, the energy consumption of a heating system for a dual low energy bed can be reduced to approx. 150 kWh/year. If the entire bed is heated by one heating system, the consumption will be twice of the above. If the heating system is installed in a hardside bed, twice the energy consumption of the low energy bed should be expected.

Indicator light	Green	Red	Yellow
Standard 24 hour operation	Temperature OK	Heating	
12 hour operation		Heating	Day: temperature OK Night: heating element switched off
Error condition (rhythmic flashing of 1 colour)	Fault of cable – check that the connection plug has been screwed on correctly.	Fault of regulator	Fault of heating element – possibly overheating, wait until the fuse has cooled down.

MATTRESS

Akva mattresses contain vinyl with phthalate-free softener to guarantee long durability and good environmental properties. Read these user instructions thoroughly before assembly.

Filling with water

Before filling the mattress with water it must be of room temperature.

How to fill a single mattress with water:

- Place the mattress in the bed frame, with the valve at the foot end.
- Pull up the valve, unscrew the cover and tilt the plug up with your nail.
- It is important to fit the corners of the mattress exact into the bed frame.
- Fill the mattress with cold water. Use a clean hose. As a general rule the mattress should be filled with water up to the upper edge of the bed frame *minus approx. 1/3 of the user's weight*. For example, if the user weighs 60 kg 20 litres is removed from the bed when it is filled to the edge (= approx. 2 cm below the top edge of the side.) This is normally equivalent to a person lying horizontally in the bed, with optimum lying comfort
- Before removing the air from the water mattress, place a towel round the valve to soak up any splashing. Now remove the air from the water mattress by squeezing the air out through the valve. Start at the head end and squeeze towards the valve. Lie across the mattress, if necessary, and roll slowly towards the valve. When all the air has been removed from the mattress the surface may have folds – this is immaterial.
- Add the bactericide and algicide Long Life.
- Press remaining air if any out through the valve. Insert the plug, screw on the cover and press down the valve until levelling with the mattress.
- Connect the 220-240 V heating element and set the thermostat to the desired temperature.

The bed is ready for use once it has warmed-up.

How to fill a dual set of mattresses with water:

- Place the mattress in the bed frame, with the valve at the foot end.
- Pull up the valve, unscrew the cover and tilt the plug up with your nail.
- It is important to fit the corners of the mattress exact into the bed frame.
- Fill the mattress with cold water. Use a clean hose. Fill the mattresses by turns. Be careful that the divider stays in place when the mattresses are filled by turns. As a general rule the mattress should be filled with water up to the upper edge of the bed frame, *minus approx. 1/3 of the user's weight*. For example, if the user weighs 60 kg 20 litres is removed from the bed when it is filled to the edge (= approx. 2 cm below the top edge of the side.) This is normally equivalent to a person lying horizontally in the bed, with optimum lying comfort.
- Before removing the air from the water mattress, place a towel round the valve to soak up any splashing. Now remove the air from the water mattress by squeezing the air out through the valve. Start at the head end and squeeze towards the valve. Lie across the mattress, if necessary, and roll slowly towards the valve. When all the air has been removed from the mattress the surface may have folds – this is immaterial.
- Add the bactericide and algicide Long Life.
- Press remaining air if any out through the valve. Insert the plug, screw on the cover and press down the valve until levelling with the mattress.
- Connect the 220-240 V heating element and set the thermostat to the desired temperature.

The bed is ready for use once it has warmed-up.

How to fill a water divider with water:

- Pull up the valve of the divider, unscrew the cover and tilt up the plug with your nail.
- Fill up the divider with water to the marking.
- Remove the surplus of air using an Airextractor
- Add the bactericide and algicide tablet, Waterbeds Conditioner Tablets

- Press the last surplus of air out through the valve. Insert the plug, screw on the cover and press the valve down levelling with the divider.

How to fill a water divider with air:

- Pull up the valve of the divider, unscrew the cover and tilt the plug up with your nail.
- Fill the divider with air.
- Insert the plug, screw on the cover and press the valve down levelling with the divider.

Maintenance & cleaning

- Remove any distracting air bubbles from the mattress by removing the air from it 2-3 times during the first 14 days. If air is constantly/continuously being formed it is recommended to add Akva Quiet when removing the air.
- Clean the surface of the water mattress at least every 3 months. Combined treatment with Vinyl Wash and Aqua Guard is recommended.
- Add the bactericide and algicide Long Life once a year.

Draining the mattress

Contact your dealer who will give you the guidance you may require regarding leasing a pump or the actual process of draining the mattress.

Note: Draining and refilling a mattress considerably reduces the stabilisation effect. This reduction partially recedes after a couple of weeks, but expect a permanent reduction of approx. 10-20% after draining.

Drain the mattress using a pump from your local Akva-dealer and dry off any external moisture. Roll up the mattress carefully from the head end and be careful not to push and displace the stabilisation layers inside the mattress. To prevent the stabilisation layers from being displaced, it is important that the mattress is completely drained.

Storing

Store the mattress rolled up. The mattress must neither be piled up nor exposed to frost.

Patching

If holes appear in a water mattress, carefully follow the following procedure:

- Empty the mattress. Make sure that the fibre layers are not displaced.
- Fill the mattress with air for instance using a vacuum cleaner.
- Locate the hole and clean it with a cleansing tissue.
- IMPORTANT: No water must come out. The repair area must be completely dry.
- Cut a round patch with a diameter 1 cm larger than the hole.
- Apply glue to the mattress (the glue must cover a larger area than the patch.) Then apply glue to the patch.
- Let the glue harden for about 2 minutes before placing the patch on the mattress.
- Now cut another patch with a diameter 2 cm larger than the first patch. Repeat the gluing process.
- Let the repaired area harden for min. 2 hours before letting the air out and refilling the mattress with water.

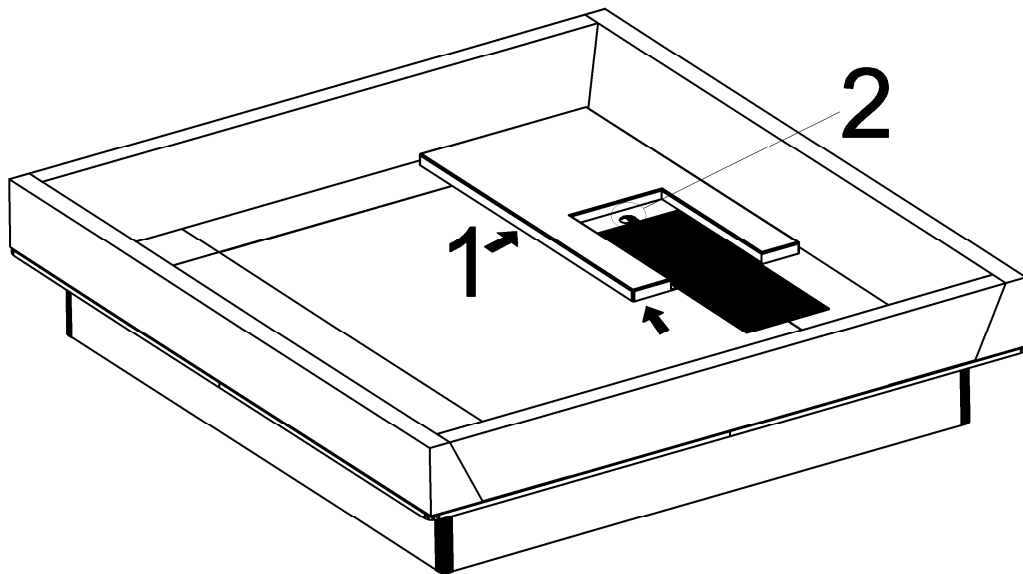
If you follow these instructions accurately, you will soon be able to sleep in your waterbed again.

Warranty

The warranty depends on cleaning and maintenance according to the instructions and only applies when the mattress label is still attached to the mattress.

MASSAGE

- The massage unit can be placed once the foam frame is built.
- Bed with dual mattresses: the massage unit is to be placed in the corner (1) so that it is not come in contact with the divider.
- The heating element is placed on the massage unit where this is stated. It is important that both vinyl and the heating element are lying flat and without any creases.
- The cable of the heating element is led through the hole in the massage unit (2). See the instructions for Akva Vital Electronic heating element before assembling it.
- Lead the cables of both heating element and the massage unit underneath the massage unit, the foam and through the hole in the bottom part of the cover. See also instructions for the waterbed model in question.
- See also separate instructions for using the massage unit.



COVER

Washing

The top of the cover must be regularly aired, washed and cleaned. Please follow the washing instructions sewn on to the cover. Do not fill the washing machine so that the drum cannot turn.

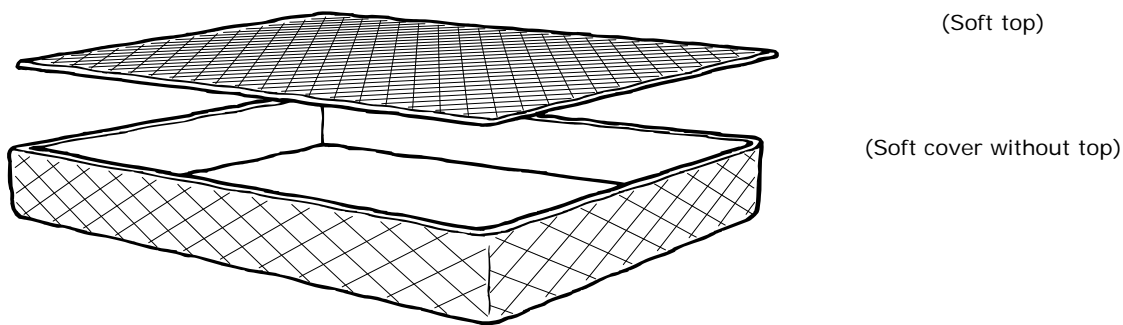
Daily airing of the bedroom and regular washing/cleaning are essential if marks and discolorations that might otherwise be caused by perspiration are to be avoided.

A protective cover placed on the cover reduces the need for washing/cleaning and extends its life span. A protective cover also reduces the risk of the above-mentioned marks and discolorations.

Covers made of extremely flexible materials will stretch over time. Washing/cleaning restores the cover to its original shape.

Re-ordering of covers

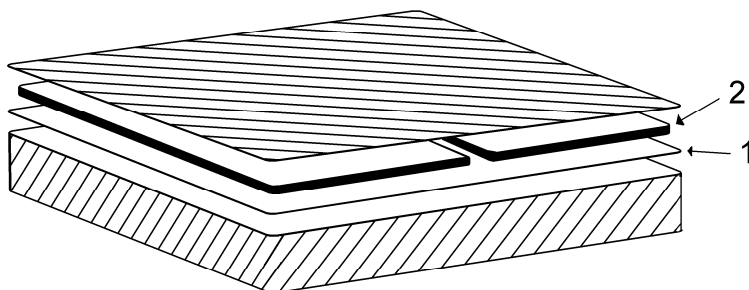
Loose cover tops can be re-ordered, for example a light summer top can be ordered for a cover bottom purchased with a thicker top for up to 5 years after purchase. If the cover is older than 5 years we recommend that a complete cover is ordered.



COMFORT TOP

For a more firm comfort, the heavy fibre filling is to be placed as follows:

- Zip the thin, brown layer of fiberweb onto the bottom of your cover (1).
- Place the two fibre layers on each side of the bed (2).
- Zip the top cover onto the fiberweb layer.



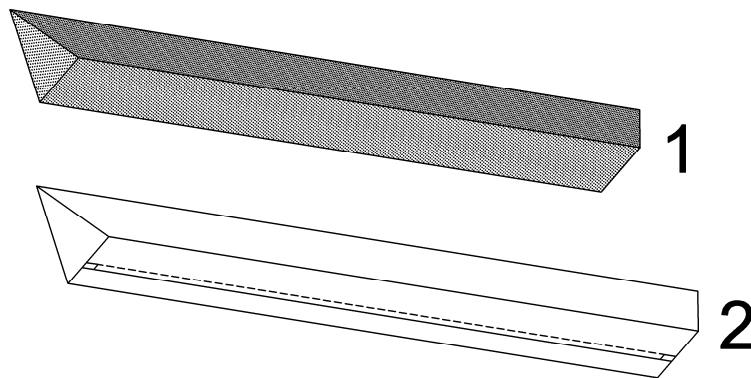
TOPLINER

The topline is attached to the lower part with the zipper, and afterwards the upper part of the cover can be zipped on.

COVER FOR FOAM DIVIDERS

Hygienic cover which can easily be wiped dry (not water-proof.)

- Bend the divider slightly on the middle and place the ends of the divider in the cover (1).
- Close up the cover tightly at the bottom with fastening tape (2).



SHEET

We recommend that the sheet is washed prior to use. After wash the size will fit your bed as the fabric is not prewashed and accordingly will shrink. In order to preserve the exclusive sateen-quality, please wash separately at 60° C and tumble dry.

Care / Maintenance / Tips

Care agents for AKVA Products

Long Life

Long Life is a disinfectant which keeps the water in the mattress clean. It is added when the water mattress is filled with water. Long Life lasts for one year. When you purchase Long Life, please complete the order form which is dated and stamped.

Vinyl Wash

Removes impurities from the surface of the water mattress. We recommend that the mattress is cleaned four times a year.

Akva Guard

Apply to the surface of the water mattress after using Vinyl Wash. Akva Guard provides the mattress with a lasting smoothness.

Akva Quiet

Removes air bubbles from the water mattress and thereby reduces splashing noise. Empty the air from the water mattress, remove surplus of air and add Akva Quiet.

Air extractor

Used to extract air from the water mattress after fitting the bed.

Maintenance

Care and cleaning of lye-treated beech

1. Dissolve 1 tablespoonful of soap flakes in about 1 litre of warm water (around 50°C)
2. Carefully apply the soapy water with a cotton cloth.
3. Use a damp cloth to wipe the wood dry.

The first treatment should be carried out about one month after installation. The treatment should be repeated whenever necessary.

Care and cleaning of oiled, waxed or varnished wood

The provided Lignal wood-care wax is a universal product for the care and cleaning of oiled, waxed or varnished wood. It is made from natural oils with beeswax and carnauba wax added. It can be used on all wooden or polished surfaces.

It will remove various marks and stains including water stains and stains which are not water-soluble.

1. Clean off the surface with a dry cloth.
2. Apply a thin layer of wax with a cotton cloth.
3. Spread the wax evenly on the surface and leave it to dry for approx. 10 min.
4. Polish the wood gently with a dry cloth.

Not spontaneously combustible. After use dispose of the cotton cloths.

The first treatment should be carried out about one month after installation. The treatment should be repeated whenever necessary.

Care and cleaning of textiles and leather

Tara/
Caballero Hand wash at 40° only. Iron at a max. temperature of 150°. Do not bleach with chlorine, dry clean or tumble dry.



Nantes Dry clean with perchlor, white spirit and similar. Do not iron, bleach with chlorine or tumble dry.



Terco Do not wash, gentle dry clean with perchlor only, iron at low temperature.



Baltico Gentle wash at 30° only, dry clean with perchlor, white spirit and similar. uni Iron and tumble dry only at low temperature.



Baltico
patterned Dry clean with perchlor only



Leather Clean with a soft cloth - if necessary with demineralised water. Do not use dishwashing liquid, detergents, solvents or any other cleaning agents.

Imitation
leather Clean with soft cloth wringed in warm water with a mild universal detergent added. Never use strong cleaners, polish or wax.

Tips

AIR AND/OR ODOUR NUISANCE

The composition of drinking water varies from one part of the country to the other. In rare cases this composition can result in a disturbance to the biological balance of the water, which can then give rise to air/odour nuisance in the water mattress.

If air is suddenly formed in the water mattress, it should be extracted and Akva Quiet added. If the problem occurs repeatedly, follow the procedure below as if odour was being emitted from the water mattress.

If an unpleasant odour emits from the water mattress, the mattress must be drained as quickly as possible. Add 3 bottles of Long Life and refill the water mattress. Make sure that the hose is flushed clean before refilling. (See section on filling the mattress.)

The odour never comes from the material that the water mattress is made of, but may be due to late or lacking addition of Long Life or maybe use of care products different to the ones recommended in the brochure.

DIVIDER

If the divider in a Soft Side bed has been pressed flat, unzip the top and pull up the divider so that it resumes its normal shape and position.

VINYL ODOUR

A new water mattress may smell of vinyl during the first couple of weeks. The odour will disappear naturally, but it can be reduced by applying Vinyl Wash and Akva Guard.

CARE AND SERVICE FORM

Assemble date:	Signature:
----------------	------------

	Conditioner - Long Life		Service	
	Date	Signature/stamp	Date	Signature/stamp
1				
2				
3				
4				
5				
6				
7				
8				
9				
10				

Notes:

WARRANTY CONDITIONS

There is a five-year guarantee covering manufacturing faults of the water mattress weldings and of the Akva Vital Electronic heating element provided the waterbed consists of original Akva parts and was bought at an authorised dealer. The guarantee is valid for new items (Production date + max. 3 months) from the date of delivery.

Besides faults in weldings, a leak in the water mattress is not covered by the guarantee, if it is not attributable to manufacturing faults.

For faults in materials and manufacturing attributable to Akva Waterbeds A/S, the guarantee covers the necessary replacement of spare parts or repairs. Transport and installation costs are responsibility of the buyer during the last four years of the guarantee period.

The guarantee will be invalidated if

- the bed is not used normally and maintained in accordance with the instructions of Akva Waterbeds A/S
- the bed is subjected to overloading.
- other than original Akva Waterbeds A/S spare parts are used.
- the lawtag has been separated from the mattress
- an emptied mattress has been stored for more than three months.

The ordinary provisions according to the Sale of Goods Act apply to flaws, complaints etc. and also covers Akva Baby, water pillows and the standard waterbed parts like safety liner, cover, foam, divider, base boards, base and any accessories.

Akva Waterbeds A/S must be informed of damage discovered by the owner as quickly as possible.

For the recognition of claims, the Akva dealer needs documentation as follows:

- invoice copy with date of purchase and date of fitting
- documentation of regular maintenance with original Akva care products.

On replacement parts, we offer the legally prescribed two-year guarantee.

Akva Waterbeds A/S cannot accept liability beyond the points specified above. Colour changes in vinyl or covers do not justify a cause for complaint.